

# T-Series High Pressure Screw-Together

- Threaded sleeve allows connection and disconnection while coupler and/or nipple are under pressure.
- Urethane seal resists extrusion under high pressure during connection and disconnection.

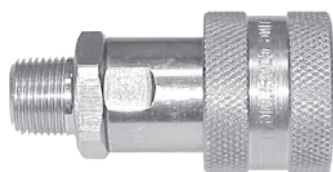


Performance Specifications	Operating Bar (PSI)	Min. Burst Bar (PSI)	Flow Rate ΔP=3 Bar	Locking Mechanism
1/4"	690 (10,000)	2,069 (30,000)	11 LPM (3 GPM)	Threaded
3/8"	690 (10,000)	2,069 (30,000)	23 LPM (6 GPM)	Threaded

Please Note: Divide Minimum Burst Pressure by four (4) for dynamic applications.

'T' Series Interchange	Parker	Stucchi	Enerpac	Holmbury
1/4"	Series 3000	IVHP	---	HPA Series
3/8"	Series 3000	IVHP	C-604	HPA Series

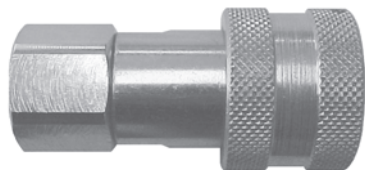
## T-Series Enerpac Interchange (Coupler)



(Male Thread)

Part Number	Body Size	Thread Size	Body Material	Weight (lb)	List Price	Bag Qty	Pack Qty
2TM2	1/4"	1/4"-18 NPTF	steel	0.25	<b>\$25.96</b>	5	50
2TBM2	1/4"	R1/4" BSPT	steel	0.25	<b>25.96</b>	5	50
3TM3	3/8"	3/8"-18 NPTF	steel	0.49	<b>28.64</b>	5	25
3TM3-SS	3/8"	3/8"-18 NPTF	316 SS	0.49	<b>168.21</b>	5	25
3TBM3	3/8"	R3/8" BSPT	steel	0.49	<b>28.64</b>	5	25

## T-Series Enerpac Interchange (Coupler)



(Female Thread)

Part Number	Body Size	Thread Size	Body Material	Weight (lb)	List Price	Bag Qty	Pack Qty
3TF3	3/8"	3/8"-18 NPTF	steel	0.49	<b>\$28.64</b>	5	25

## T-Series Enerpac Interchange (Nipple)



(Female Thread)

Part Number	Body Size	Thread Size	Body Material	Weight (lb)	List Price	Bag Qty	Pack Qty
T2F2	1/4"	1/4"-18 NPTF	steel	0.14	<b>\$15.58</b>	5	50
T2BF2	1/4"	G1/4" BSPP	steel	0.14	<b>15.58</b>	5	50
T3F3	3/8"	3/8"-18 NPTF	steel	0.23	<b>16.41</b>	5	25
T3F3-SS	3/8"	3/8"-18 NPTF	316 SS	0.23	<b>93.00</b>	5	25
T3BF3	3/8"	G3/8" BSPP	steel	0.23	<b>16.41</b>	5	25

## T-Series Enerpac Interchange (Coupler Dust Plug)



Part Number	Body Size	Cap Lanyard	Body Material	Weight (lb)	List Price	Bag Qty	Pack Qty
2TDP	1/4"	steel chain	steel	0.10	<b>\$6.57</b>	5	50
3TDP	3/8"	steel chain	steel	0.16	<b>6.57</b>	5	25

## T-Series Enerpac Interchange (Nipple Dust Cap)



Part Number	Body Size	Cap Lanyard	Body Material	Weight (lb)	List Price	Bag Qty	Pack Qty
T2DC	1/4"	steel chain	steel	0.12	<b>\$10.79</b>	5	50
T3DC	3/8"	steel chain	steel	0.19	<b>10.79</b>	5	25

T-Series