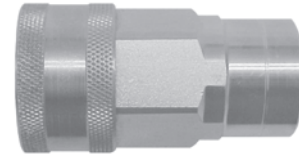


AG-Series Agricultural Interchange (Coupler)

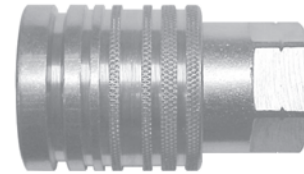
Part Number	Body Size	Thread Size	Body Material	Weight (lb)	List Price	Bag Qty	Pack Qty
2AGF2	1/4"	1/4"-18 NPTF	steel	0.24	\$17.20	10	100
2AGF2-PV	1/4"	1/4"-18 NPTF	steel	0.24	17.20	10	100
2AGOF3	1/4"	9/16"-18 ORB	steel	0.24	13.79	10	100
2AGOF3-PV	1/4"	9/16"-18 ORB	steel	0.24	13.79	10	100
3AGF3	3/8"	3/8"-18 NPTF	steel	0.51	20.45	10	50
3AGF3-PV	3/8"	3/8"-18 NPTF	steel	0.51	20.45	10	50
4AGF4	1/2"	1/2"-14 NPTF	steel	0.58	20.87	5	25
4AGF4-PV	1/2"	1/2"-14 NPTF	steel	0.58	20.87	5	25
4AGOF4	1/2"	3/4"-16 ORB	steel	0.64	24.96	5	25
4AGOF4-PV	1/2"	3/4"-16 ORB	steel	0.64	24.96	5	25
4AGOF5	1/2"	7/8"-14 ORB	steel	0.59	24.96	5	25
4AGOF5-PV	1/2"	7/8"-14 ORB	steel	0.59	24.96	5	25
4AGF6	1/2"	3/4"-14 NPTF	steel	0.71	27.90	5	25
4AGF6-PV	1/2"	3/4"-14 NPTF	steel	0.71	27.90	5	25
6AGF6	3/4"	3/4"-14 NPTF	steel	1.00	52.41	---	10
6AGF6-PV	3/4"	3/4"-14 NPTF	steel	1.00	52.41	---	10
8AGF8	1"	1"-11 1/2 NPTF	steel	1.89	78.90	---	10
8AGF8-PV	1"	1"-11 1/2 NPTF	steel	1.89	78.90	---	10



(Female Thread)

AG-Series Agricultural Interchange (Push-Pull Coupler)

Part Number	Body Size	Thread Size	Body Material	Weight (lb)	List Price	Bag Qty	Pack Qty
3AGF3-PS	3/8"	3/8"-14 NPTF	steel	0.58	\$30.80	10	50
3AGF3-PV-PS	3/8"	3/8"-14 NPTF	steel	0.58	30.80	10	50
4AGF4-PS	1/2"	1/2"-14 NPTF	steel	0.75	26.77	5	25
4AGF4-PV-PS	1/2"	1/2"-14 NPTF	steel	0.75	26.77	5	25
4AGOF4-PS	1/2"	3/4"-16 ORB	steel	0.83	27.51	5	25
4AGOF4-PV-PS	1/2"	3/4"-16 ORB	steel	0.83	27.51	5	25
4AGOF5-PS	1/2"	7/8"-14 ORB	steel	0.75	27.51	5	25
4AGOF5-PV-PS	1/2"	7/8"-14 ORB	steel	0.75	27.51	5	25
4AGF6-PS	1/2"	3/4"-14 NPTF	steel	0.75	28.06	5	25
4AGF6-PV-PS	1/2"	3/4"-14 NPTF	steel	0.75	28.06	5	25

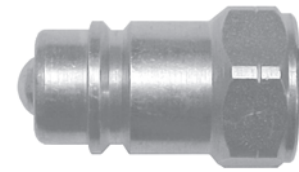


(Female Thread)



AG-Series Agricultural Interchange (Nipple)

Part Number	Body Size	Thread Size	Body Material	Weight (lb)	List Price	Bag Qty	Pack Qty
AG2F2	1/4"	1/4"-18 NPTF	steel	0.08	\$8.53	10	100
AG2F2-PV	1/4"	1/4"-18 NPTF	steel	0.08	8.53	10	100
AG2OF3	1/4"	9/16"-18 ORB	steel	0.08	6.84	10	100
AG2OF3-PV	1/4"	9/16"-18 ORB	steel	0.08	6.84	10	100
AG3F3	3/8"	3/8"-18 NPTF	steel	0.16	9.25	10	50
AG3F3-PV	3/8"	3/8"-18 NPTF	steel	0.16	9.25	10	50
AG4F4	1/2"	1/2"-14 NPTF	steel	0.20	9.17	5	25
AG4F4-PV	1/2"	1/2"-14 NPTF	steel	0.20	9.17	5	25
AG4OF4	1/2"	3/4"-16 ORB	steel	0.20	11.35	5	25
AG4OF4-PV	1/2"	3/4"-16 ORB	steel	0.20	11.35	5	25
AG4OF5	1/2"	7/8"-14 ORB	steel	0.25	11.35	5	25
AG4OF5-PV	1/2"	7/8"-14 ORB	steel	0.25	11.35	5	25
AG4F6	1/2"	3/4"-14 NPTF	steel	0.25	12.41	5	25
AG4F6-PV	1/2"	3/4"-14 NPTF	steel	0.25	12.41	5	25
AG6F6	3/4"	3/4"-14 NPTF	steel	0.50	26.93	---	10
AG6F6-PV	3/4"	3/4"-14 NPTF	steel	0.50	35.08	---	10
AG8F8	1"	1"-11 1/2 NPTF	steel	0.62	26.93	---	10
AG8F8-PV	1"	1"-11 1/2 NPTF	steel	0.62	35.08	---	10



(Female Thread)

Dixon carries two valve styles for the Agricultural coupling series, 'Ball' valve and 'Poppet' valve. The 'Ball' valve coupling has historically provided greater longevity while the 'Poppet' valve will improve flow while in operation.



Attention Required!

AG-Series