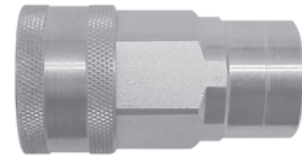


K-Series ISO-A Interchange (Coupler)

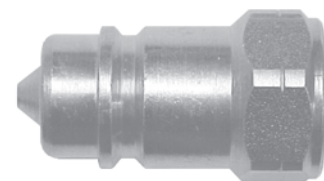
Part Number	Body Size	Thread Size	Body Material	Weight (lb)	List Price	Bag Qty	Pack Qty
2KF1	1/4"	1/8"-27 NPTF	steel	0.27	\$18.07	10	100
2KF2	1/4"	1/4"-18 NPTF	steel	0.26	18.07	10	100
2KBF2	1/4"	G1/4" BSPP	steel	0.26	19.89	10	100
3KF3	3/8"	3/8"-18 NPTF	steel	0.39	22.29	10	50
3KOF3	3/8"	9/16"-18 ORB	steel	0.38	28.33	10	50
3KBF3	3/8"	G3/8" BSPP	steel	0.39	24.53	10	50
4KF4	1/2"	1/2"-14 NPTF	steel	0.67	22.29	5	25
4KOF4	1/2"	3/4"-16 ORB	steel	0.67	28.33	5	25
4KBF4	1/2"	G1/2" BSPP	steel	0.67	24.53	5	25
4KOF5	1/2"	7/8"-14 ORB	steel	0.64	28.33	5	25
4KF6	1/2"	3/4"-14 NPTF	steel	0.71	30.95	5	25
6KF6	3/4"	3/4"-14 NPTF	steel	1.90	41.82	---	10
6KOF6	3/4"	1-1/6"-12 ORB	steel	1.90	45.65	---	10
6KBF6	3/4"	G3/4" BSPP	steel	1.90	46.01	---	10
8KF8	1"	1"-11 1/2 NPTF	steel	2.14	62.83	---	10
8KOF8	1"	1-5/16"-12 ORB	steel	2.14	72.16	---	10
8KBF8	1"	G1" BSPP	steel	2.14	69.10	---	10
10KF10	1-1/4"	1-1/4"-11 1/2 NPTF	steel	2.93	179.18	---	1
10KBF10	1-1/4"	G1-1/4" BSPP	steel	2.93	197.10	---	1
12KF12	1-1/2"	1-1/2"-11 1/2 NPTF	steel	4.78	268.11	---	1
12KBF12	1-1/2"	G1-1/2" BSPP	steel	4.78	294.91	---	1
16KF16	2"	2"-11 1/2 NPTF	steel	8.49	428.98	---	1
16KBF16	2"	G2" BSPP	steel	8.49	471.86	---	1



(Female Thread)

K-Series ISO-A Interchange (Nipple)

Part Number	Body Size	Thread Size	Body Material	Weight (lb)	List Price	Bag Qty	Pack Qty
K2F1	1/4"	1/8"-27 NPTF	steel	0.08	\$9.04	10	100
K2F2	1/4"	1/4"-18 NPTF	steel	0.07	9.04	10	100
K2BF2	1/4"	G1/4" BSPP	steel	0.07	9.04	10	100
K3F3	3/8"	3/8"-18 NPTF	steel	0.11	9.96	10	50
K3OF3	3/8"	9/16"-18 ORB	steel	0.13	12.71	10	50
K3BF3	3/8"	G3/8" BSPP	steel	0.11	10.96	10	50
K4F4	1/2"	1/2"-14 NPTF	steel	0.21	9.96	5	25
K4OF4	1/2"	3/4"-16 ORB	steel	0.22	12.71	5	25
K4BF4	1/2"	G1/2" BSPP	steel	0.21	10.96	5	25
K4OF5	1/2"	7/8"-14 ORB	steel	0.21	12.71	5	25
K4F6	1/2"	3/4"-14 NPTF	steel	0.33	15.16	5	25
K6F6	3/4"	3/4"-14 NPTF	steel	0.49	19.92	---	10
K6OF6	3/4"	1-1/6"-12 ORB	steel	0.47	23.75	---	10
K6BF6	3/4"	G3/4" BSPP	steel	0.49	21.91	---	10
K8F8	1"	1"-11 1/2 NPTF	steel	0.75	29.57	---	10
K8OF8	1"	1-5/16"-12 ORB	steel	0.72	35.24	---	10
K8BF8	1"	G1" BSPP	steel	0.75	32.53	---	10
K10F10	1-1/4"	1-1/4"-11 1/2 NPTF	steel	1.26	86.30	---	1
K10BF10	1-1/4"	G1-1/4" BSPP	steel	1.26	94.93	---	1
K12F12	1-1/2"	1-1/2"-11 1/2 NPTF	steel	2.05	131.59	---	1
K12BF12	1-1/2"	G1-1/2" BSPP	steel	2.05	144.77	---	1
K16F16	2"	2"-11 1/2 NPTF	steel	3.64	231.50	---	1
K16BF16	2"	G2" BSPP	steel	3.64	254.64	---	1



(Female Thread)

K-Series