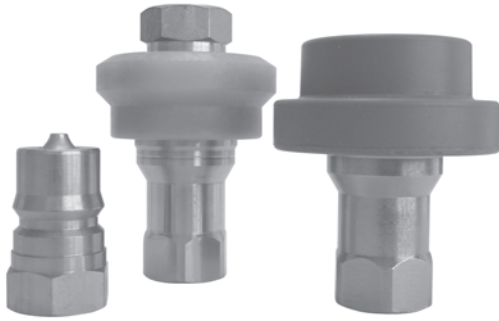


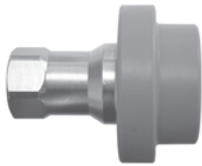
# H-Series ISO-B Food Grade Couplings

- H-Series couplers and nipples are fully compliant with the parameters outlined in ISO7241 Series 'B'.
- Viton™ seals are FDA approved for Food Service applications, such as fryers and fryer-oil filtering equipment.
- Large diameter flanged coupler sleeves will prevent damage when dropped and are easier to operate with gloves on.
- Couplings of steel with nickel plating, 303SS and 316SS will fulfill the requirements of various food service applications.



Performance Specifications	Operating Bar (PSI)	Coupled Burst Bar (PSI)	Flow Rate ΔP=2 Bar	Locking Mechanism
1/2" steel	293 (4,250)	1,172 (17,000)	76 LPM (20 GPM)	9 Balls
1/2" 303 SS	230 (3,333)	1,379 (20,000)	76 LPM (20 GPM)	9 Balls
1/2" 316 SS	213 (3,083)	1,276 (18,500)	76 LPM (20 GPM)	9 Balls
Interchange Standards	US Military	Industry Standards	International Standards	ANSI/NFPA
1/2"	---	---	ISO7241-B	B93.113M-B
'HFG' Series Interchange	Parker	Aeroquip	---	---
1/2"	60-Series	FD45	---	---

## H-Series ISO-B Food Grade Interchange (Silicone Flanged Coupler)



(Female Thread)

Part Number	Body Size	Thread Size	Body Material	Weight (lb)	List Price	Bag Qty	Pack Qty
D-4HF4-SV-FSB-8	1/2"	1/2"-14 NPTF	steel	0.75	<b>\$73.01</b>	5	25
D-4HF4-S-FSB	1/2"	1/2"-14 NPTF	303 SS	0.75	<b>120.34</b>	5	25
D-4HF4-SS-FSB	1/2"	1/2"-14 NPTF	316 SS	0.75	<b>230.57</b>	5	25

## H-Series ISO-B Food Grade Interchange (Nylon Flanged Coupler)



(Female Thread)

Part Number	Body Size	Thread Size	Body Material	Weight (lb)	List Price	Bag Qty	Pack Qty
D-4HF4-SV-FNS-8	1/2"	1/2"-14 NPTF	steel	0.75	<b>\$70.82</b>	5	25
D-4HF4-S-FNS	1/2"	1/2"-14 NPTF	303 SS	0.75	<b>112.92</b>	5	25
D-4HF4-SS-FNS	1/2"	1/2"-14 NPTF	316 SS	0.75	<b>220.20</b>	5	25

## H-Series ISO-B Food Grade Interchange (Nipple)



(Female Thread)

Part Number	Body Size	Thread Size	Body Material	Weight (lb)	List Price	Bag Qty	Pack Qty
D-H4F4-SV-8	1/2"	1/2"-14 NPTF	steel	0.24	<b>\$22.11</b>	5	25
D-H4F4-S	1/2"	1/2"-14 NPTF	303 SS	0.24	<b>60.57</b>	5	25
D-H4F4-SS	1/2"	1/2"-14 NPTF	316 SS	0.24	<b>96.51</b>	5	25



Attention Required!

The 'FSB' and 'FNS' coupler sleeves have a nickel plated steel core that is used to stabilize and strengthen the outer Silicone (FSB) or Nylon (FNS) bumpers. This nickel plated steel core is used for all couplers in this series but does not affect corrosion resistance for the 303SS or 316SS coupler models.