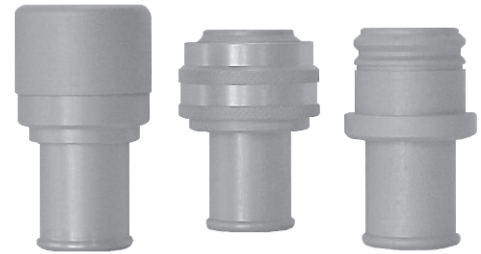


AT-Series Astronautics Fresh-Air Couplings

- Fresh-Air Break-Away couplings have been designed to disconnect when 11LBS of force is applied.
- Over 50 years of reliable military service in a variety of Fresh-Air applications.
- High flow valve system ensures optimal flow performance with minimal pressure drop.
- Standard Fresh-Air Dual-Sleeve couplings are designed to prevent accidental disconnection during regular operation.

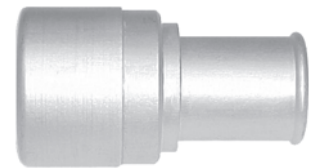


Performance Specifications	Operating Bar (PSI)	Min. Burst PSI (Bar)	Flow $\Delta P=0.4\text{Bar}$ (6.9 Bar Inlet)	Locking Mechanism
3/4"	17 (250)	69 (1,000)	200 CFM	3 Balls

AT-Series Astronautics Fresh-Air Break-Away (Coupler)

Part Number	Body Size	Barb Configuration	Body Material	Weight (lb)	List Price	Bag Qty	Pack Qty
210AT	3/4"	3/4" Hose Bead	aluminum	0.15	\$75.18	---	20
210EAT *	3/4"	3/4" Hose Bead	aluminum	0.17	\$7.26	---	20

* 210EAT model is unvalved



(Hose Bead)

AT-Series Astronautics Fresh-Air Dual-Sleeve System (Coupler)

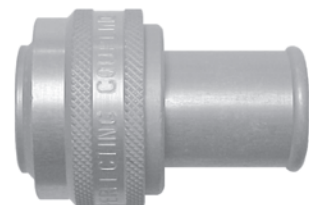
Part Number	Body Size	Thread Size	Body Material	Weight (lb)	List Price	Bag Qty	Pack Qty
1010AT	3/4"	3/4" O-Ring	aluminum	0.05	\$45.37	---	20



(Male Thread)

AT-Series Astronautics Fresh-Air Dual-Sleeve System (Nipple)

Part Number	Body Size	Barb Configuration	Body Material	Weight (lb)	List Price	Bag Qty	Pack Qty
56AT	3/4"	3/4" Hose Bead	aluminum	0.09	\$53.41	---	20



(Hose Bead)

AT-Series Astronautics Fresh-Air Dual-Sleeve System (Nipple Cap)

Part Number	Body Size	Cap Lanyard	Body Material	Weight (lb)	List Price	Bag Qty	Pack Qty
1015N	3/4"	N/A	aluminum	0.08	POR	---	20



AT-Series