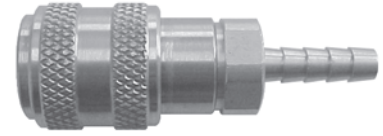


## D-Series Industrial Interchange (Automatic Safety Coupler)

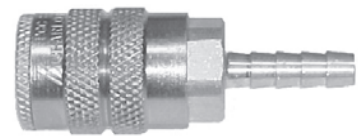
Part Number	Body Size	Barb Configuration	Body Material	Weight (lb)	List Price	Bag Qty	Pack Qty
2DS2-B	1/4"	1/4" Hose Barb	brass	0.27	\$12.63	10	100
2DS2-S	1/4"	1/4" Hose Barb	303 SS	0.27	55.51	10	100
2DB2-B	1/4"	1/4" Push-Loc	brass	0.27	12.99	10	100
2DS2.5-B	1/4"	5/16" Hose Barb	brass	0.27	12.63	10	100
2DS3-B	1/4"	3/8" Hose Barb	brass	0.28	12.63	10	100
2DB3-B	1/4"	3/8" Push-Loc	brass	0.29	12.99	10	100
3DS2-B	3/8"	1/4" Hose Barb	brass	0.37	23.27	10	50
3DS3-B	3/8"	3/8" Hose Barb	brass	0.39	23.54	10	50
3DS3-S	3/8"	3/8" Hose Barb	303 SS	0.39	75.42	10	50
3DB3-B	3/8"	3/8" Push-Loc	brass	0.40	25.51	10	50
3DS4-B	3/8"	1/2" Hose Barb	brass	0.41	24.60	10	50
4DS3-B	1/2"	3/8" Hose Barb	brass	0.56	30.44	5	30
4DS4-B	1/2"	1/2" Hose Barb	brass	0.59	30.88	5	30
4DS4-S	1/2"	1/2" Hose Barb	303 SS	0.59	98.98	5	30
4DB4-B	1/2"	1/2" Push-Loc	brass	0.56	30.01	5	30
4DS6-B	1/2"	3/4" Hose Barb	brass	0.65	31.16	5	30
6DS4-B	3/4"	1/2" Hose Barb	brass	0.90	50.93	---	20
6DS6-B	3/4"	3/4" Hose Barb	brass	0.93	51.48	---	20
6DS8-B	3/4"	1" Hose Barb	brass	1.03	51.60	---	20



(Standard & Push-Loc Hose Barb)

## F-Series Industrial Interchange (Manual Coupler)

Part Number	Body Size	Barb Configuration	Body Material	Weight (lb)	List Price	Bag Qty	Pack Qty
2FS2-B	1/4"	1/4" Hose Barb	brass	0.18	\$10.46	10	100
2FS2	1/4"	1/4" Hose Barb	steel	0.18	9.07	10	100
2FS2-S	1/4"	1/4" Hose Barb	303 SS	0.18	57.68	10	100
2FB2-B	1/4"	1/4" Push-Loc	brass	0.18	10.98	10	100
2FS2.5-B	1/4"	5/16" Hose Barb	brass	0.18	10.64	10	100
2FS3-B	1/4"	3/8" Hose Barb	brass	0.18	10.80	10	100
2FB3-B	1/4"	3/8" Push-Loc	brass	0.19	10.91	10	100
3FS2	3/8"	1/4" Hose Barb	steel	0.27	17.79	10	50
3FS3	3/8"	3/8" Hose Barb	steel	0.27	16.90	10	50
3FS3-S	3/8"	3/8" Hose Barb	303 SS	0.28	70.64	10	50
3FB3	3/8"	3/8" Push-Loc	steel	0.27	17.63	10	50
3FS4	3/8"	1/2" Hose Barb	steel	0.28	17.56	10	50
4FS3	1/2"	3/8" Hose Barb	steel	0.41	21.00	5	30
4FS4	1/2"	1/2" Hose Barb	steel	0.43	21.10	5	30
4FS4-S	1/2"	1/2" Hose Barb	303 SS	0.43	73.76	5	30
4FB4	1/2"	1/2" Push-Loc	steel	0.43	22.00	5	30
4FS6	1/2"	3/4" Hose Barb	steel	0.48	21.58	5	30



(Standard & Push-Loc Hose Barb)

## DF-Series Industrial Interchange (Nipple)

Part Number	Body Size	Barb Configuration	Body Material	Weight (lb)	List Price	Bag Qty	Pack Qty
D2S2	1/4"	1/4" Hose Barb	steel	0.04	\$2.61	10	100
D2S2-B	1/4"	1/4" Hose Barb	brass	0.05	3.58	10	100
D2S2-S	1/4"	1/4" Hose Barb	303 SS	0.05	10.86	10	100
D2B2	1/4"	1/4" Push-Loc	steel	0.04	3.13	10	100
D2B2-B	1/4"	1/4" Push-Loc	brass	0.04	2.62	10	100
D2S2.5	1/4"	5/16" Hose Barb	steel	0.04	2.61	10	100
D2S3	1/4"	3/8" Hose Barb	steel	0.05	2.77	10	100
D2S3-B	1/4"	3/8" Hose Barb	brass	0.05	4.07	10	100
D2B3	1/4"	3/8" Push-Loc	steel	0.05	3.32	10	100
D3S2	3/8"	1/4" Hose Barb	steel	0.06	5.15	10	50
D3S3	3/8"	3/8" Hose Barb	steel	0.07	5.02	10	50
D3S3-B	3/8"	3/8" Hose Barb	brass	0.08	6.69	10	50
D3S3-S	3/8"	3/8" Hose Barb	303 SS	0.08	13.52	10	50
D3B3	3/8"	3/8" Push-Loc	steel	0.07	5.02	10	50
D3S4	3/8"	1/2" Hose Barb	steel	0.08	5.91	10	50
D4S3	1/2"	3/8" Hose Barb	steel	0.10	5.17	10	50
D4S4	1/2"	1/2" Hose Barb	steel	0.11	5.21	10	50
D4S4-B	1/2"	1/2" Hose Barb	brass	0.12	6.84	10	50
D4S4-S	1/2"	1/2" Hose Barb	303 SS	0.12	21.72	10	50
D4B4	1/2"	1/2" Push-Loc	steel	0.11	8.05	10	50
D4S6	1/2"	3/4" Hose Barb	steel	0.18	8.75	10	50
D6S4	3/4"	1/2" Hose Barb	steel	0.19	14.39	5	20
D6S6	3/4"	3/4" Hose Barb	steel	0.23	12.54	5	20
D6S8	3/4"	1" Hose Barb	steel	0.36	18.94	5	20



(Standard & Push-Loc Hose Barb)

**DF-Series**