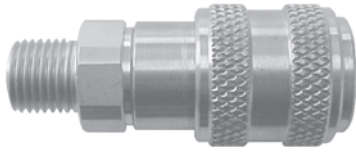


### D-Series Industrial Interchange (Automatic Safety Coupler)



(Male Thread)

Part Number	Body Size	Thread Size	Body Material	Weight (lb)	List Price	Bag Qty	Pack Qty
2DM1-B	1/4"	1/8"-27 NPTF	brass	0.27	\$11.34	10	100
2DM2-B	1/4"	1/4"-18 NPTF	brass	0.28	11.26	10	100
2DM2-S	1/4"	1/4"-18 NPTF	303 SS	0.29	48.81	10	100
2DBM2-B	1/4"	R1/4" BSPT	brass	0.28	11.26	10	100
2DM3-B	1/4"	3/8"-18 NPTF	brass	0.28	12.63	10	100
2DBM3-B	1/4"	R3/8" BSPT	brass	0.28	12.63	10	100
3DM2-B	3/8"	1/4"-18 NPTF	brass	0.36	22.65	10	50
3DM3-B	3/8"	3/8"-18 NPTF	brass	0.39	22.65	10	50
3DM3-S	3/8"	3/8"-18 NPTF	303 SS	0.39	72.72	10	50
3DBM3-B	3/8"	R3/8" BSPT	brass	0.39	22.65	10	50
3DM4-B	3/8"	1/2"-14 NPTF	brass	0.41	23.27	10	50
4DM3-B	1/2"	3/8"-18 NPTF	brass	0.58	29.06	5	30
4DM4-B	1/2"	1/2"-14 NPTF	brass	0.61	28.27	5	30
4DM4-S	1/2"	1/2"-14 NPTF	303 SS	0.62	95.29	5	30
4DBM4-B	1/2"	R1/2" BSPT	brass	0.61	28.27	5	30
4DM6-B	1/2"	3/4"-14 NPTF	brass	0.67	29.83	5	30
6DM4-B	3/4"	1/2"-14 NPTF	brass	0.89	49.67	---	20
6DM6-B	3/4"	3/4"-14 NPTF	brass	0.91	49.31	---	20
6DM8-B	3/4"	1"-11 1/2 NPTF	brass	0.99	50.77	---	20

### F-Series Industrial Interchange (Manual Coupler)



(Male Thread)



Part Number	Body Size	Thread Size	Body Material	Weight (lb)	List Price	Bag Qty	Pack Qty
2FM1-B	1/4"	1/8"-27 NPTF	brass	0.18	\$9.76	10	100
2FM1-S	1/4"	1/8"-27 NPTF	303 SS	0.18	53.33	10	100
2FM2-B	1/4"	1/4"-18 NPTF	brass	0.18	8.77	10	100
2FM2	1/4"	1/4"-18 NPTF	steel	0.18	8.97	10	100
2FM2-S	1/4"	1/4"-18 NPTF	303 SS	0.19	37.35	10	100
2FBM2-B	1/4"	R1/4" BSPT	brass	0.18	9.14	10	100
2FM3-B	1/4"	3/8"-18 NPTF	brass	0.19	10.46	10	100
2FBM3-B	1/4"	R3/8" BSPT	brass	0.19	10.46	10	100
3FM2	3/8"	1/4"-18 NPTF	steel	0.26	15.70	10	50
3FM3	3/8"	3/8"-18 NPTF	steel	0.27	14.78	10	50
3FM3-B-ZV	3/8"	3/8"-18 NPTF	brass	0.27	22.38	10	50
3FM3-S	3/8"	3/8"-18 NPTF	303 SS	0.28	65.88	10	50
3FBM3	3/8"	R3/8" BSPT	steel	0.27	14.78	10	50
3FM4	3/8"	1/2"-14 NPTF	steel	0.29	15.58	10	50
4FM3	1/2"	3/8"-18 NPTF	steel	0.42	18.37	5	30
4FM4	1/2"	1/2"-14 NPTF	steel	0.45	18.72	5	30
4FM4-S	1/2"	1/2"-14 NPTF	303 SS	0.47	95.29	5	30
4FBM4	1/2"	R1/2" BSPT	steel	0.45	18.72	5	30
4FM6	1/2"	3/4"-14 NPTF	steel	0.50	20.50	5	30

### DF-Series Industrial Interchange (Nipple)



(Male Thread)

Part Number	Body Size	Thread Size	Body Material	Weight (lb)	List Price	Bag Qty	Pack Qty
D2M1	1/4"	1/8"-27 NPTF	steel	0.05	\$1.86	10	100
D2M1-B	1/4"	1/8"-27 NPTF	brass	0.05	2.91	10	100
D2M1-S	1/4"	1/8"-27 NPTF	303 SS	0.05	11.10	10	100
D2M2	1/4"	1/4"-18 NPTF	steel	0.05	1.62	10	100
D2M2-B	1/4"	1/4"-18 NPTF	brass	0.06	2.46	10	100
D2M2-S	1/4"	1/4"-18 NPTF	303 SS	0.05	7.23	10	100
D2BM2	1/4"	R1/4" BSPT	steel	0.05	1.62	10	100
D2M3	1/4"	3/8"-18 NPTF	steel	0.07	2.37	10	100
D2M3-B	1/4"	3/8"-18 NPTF	brass	0.08	3.62	10	100
D2BM3	1/4"	R3/8" BSPT	steel	0.07	3.13	10	100
D3M2	3/8"	1/4"-18 NPTF	steel	0.08	3.14	10	50
D3M3	3/8"	3/8"-18 NPTF	steel	0.09	3.33	10	50
D3M3-B	3/8"	3/8"-18 NPTF	brass	0.09	5.45	10	50
D3M3-S	3/8"	3/8"-18 NPTF	303 SS	0.09	15.33	10	50
D3BM3	3/8"	R3/8" BSPP	steel	0.09	3.33	10	50
D3M4	3/8"	1/2"-14 NPTF	steel	0.15	5.43	10	50
D4M2	1/2"	1/4"-18 NPTF	steel	0.14	4.54	10	50
D4M3	1/2"	3/8"-18 NPTF	steel	0.16	4.54	10	50
D4M4	1/2"	1/2"-14 NPTF	steel	0.16	5.11	10	50
D4M4-B	1/2"	1/2"-14 NPTF	brass	0.18	7.92	10	50
D4M4-S	1/2"	1/2"-14 NPTF	303 SS	0.16	23.53	10	50
D4BM4	1/2"	R1/2" BSPT	steel	0.16	5.11	10	50
D4M6	1/2"	3/4"-14 NPTF	steel	0.24	7.88	10	50
D6M4	3/4"	1/2"-14 NPTF	steel	0.22	9.70	5	20
D6M6	3/4"	3/4"-14 NPTF	steel	0.25	9.90	5	20
D6M8	3/4"	1"-11 1/2 NPTF	steel	0.26	14.17	5	20