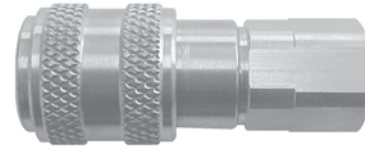


## D-Series Industrial Interchange (Automatic Safety Coupler)

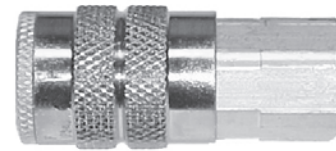
Part Number	Body Size	Thread Size	Body Material	Weight (lb)	List Price	Bag Qty	Pack Qty
2DF1-B	1/4"	1/8"-27 NPTF	brass	0.30	\$12.08	10	100
2DF2-B	1/4"	1/4"-18 NPTF	brass	0.28	11.26	10	100
2DF2-S	1/4"	1/4"-18 NPTF	303 SS	0.29	54.82	10	100
2DBF2-B	1/4"	G1/4" BSPP	brass	0.28	11.26	10	100
2DF3-B	1/4"	3/8"-18 NPTF	brass	0.30	12.69	10	100
2DBF3-B	1/4"	G3/8" BSPP	brass	0.30	12.69	10	100
3DF2-B	3/8"	1/4"-18 NPTF	brass	0.43	22.65	10	50
3DF3-B	3/8"	3/8"-18 NPTF	brass	0.42	22.65	10	50
3DF3-S	3/8"	3/8"-18 NPTF	303 SS	0.42	78.77	10	50
3DBF3-B	3/8"	G3/8" BSPP	brass	0.42	22.65	10	50
3DF4-B	3/8"	1/2"-14 NPTF	brass	0.46	23.37	10	50
4DF3-B	1/2"	3/8"-18 NPTF	brass	0.56	30.45	5	30
4DF4-B	1/2"	1/2"-14 NPTF	brass	0.66	28.27	5	30
4DF4-S	1/2"	1/2"-14 NPTF	303 SS	0.67	99.76	5	30
4DBF4-B	1/2"	G1/2" BSPP	brass	0.66	28.27	5	30
4DF6-B	1/2"	3/4"-14 NPTF	brass	0.73	29.83	5	30
6DF4-B	3/4"	1/2"-14 NPTF	brass	1.10	49.67	---	20
6DF6-B	3/4"	3/4"-14 NPTF	brass	1.10	49.31	---	20
6DF8-B	3/4"	1"-11 1/2 NPTF	brass	1.24	50.77	---	20



(Female Thread)

## F-Series Industrial Interchange (Manual Coupler)

Part Number	Body Size	Thread Size	Body Material	Weight (lb)	List Price	Bag Qty	Pack Qty
2FF1-B	1/4"	1/8"-27 NPTF	brass	0.20	\$10.51	10	100
2FBF1-B	1/4"	G1/8" BSPP	brass	0.20	10.51	10	100
2FF2-B	1/4"	1/4"-18 NPTF	brass	0.19	8.77	10	100
2FF2	1/4"	1/4"-18 NPTF	steel	0.20	8.97	10	100
2FF2-S	1/4"	1/4"-18 NPTF	303 SS	0.20	38.57	10	100
2FBF2-B	1/4"	G1/4" BSPP	brass	0.19	9.14	10	100
2FF3-B	1/4"	3/8"-18 NPTF	brass	0.20	11.20	10	100
2FBF3-B	1/4"	G3/8" BSPP	brass	0.20	11.20	10	100
3FF2	3/8"	1/4"-18 NPTF	steel	0.30	16.02	10	50
3FF3	3/8"	3/8"-18 NPTF	steel	0.32	15.70	10	50
3FF3-B-2V	3/8"	3/8"-18 NPTF	brass	0.32	22.76	10	50
3FF3-S	3/8"	3/8"-18 NPTF	303 SS	0.32	55.53	10	50
3FBF3	3/8"	G3/8" BSPP	steel	0.32	15.74	10	50
3FF4	3/8"	1/2"-14 NPTF	steel	0.34	16.79	10	50
4FF3	1/2"	3/8"-18 NPTF	steel	0.46	19.13	5	30
4FF4	1/2"	1/2"-14 NPTF	steel	0.56	19.13	5	30
4FF4-S	1/2"	1/2"-14 NPTF	303 SS	0.56	85.78	5	30
4FBF4	1/2"	G1/2" BSPP	steel	0.56	19.13	5	30
4FF6	1/2"	3/4"-14 NPTF	steel	0.63	19.98	5	30



(Female Thread)

## DF-Series Industrial Interchange (Nipple)

Part Number	Body Size	Thread Size	Body Material	Weight (lb)	List Price	Bag Qty	Pack Qty
D2F1	1/4"	1/8"-27 NPTF	steel	0.03	\$2.05	10	100
D2F2	1/4"	1/4"-18 NPTF	steel	0.03	1.85	10	100
D2F2-B	1/4"	1/4"-18 NPTF	brass	0.05	2.91	10	100
D2F2-S	1/4"	1/4"-18 NPTF	303 SS	0.05	9.98	10	100
D2BF2	1/4"	G1/4" BSPP	steel	0.05	1.85	10	100
D2F3	1/4"	3/8"-18 NPTF	steel	0.08	4.63	10	100
D2F3-B	1/4"	3/8"-18 NPTF	brass	0.08	4.17	10	100
D2BF3	1/4"	G3/8" BSPP	steel	0.08	3.23	10	100
D3F2	3/8"	1/4"-18 NPTF	steel	0.06	4.18	10	50
D3F3	3/8"	3/8"-18 NPTF	steel	0.09	3.95	10	50
D3F3-B	3/8"	3/8"-18 NPTF	brass	0.10	6.01	10	50
D3F3-S	3/8"	3/8"-18 NPTF	303 SS	0.09	17.60	10	50
D3BF3	3/8"	G3/8" BSPP	steel	0.09	3.95	10	50
D3F4	3/8"	1/2"-14 NPTF	steel	0.13	5.61	10	50
D4F3	1/2"	3/8"-18 NPTF	steel	0.12	5.13	10	50
D4F4	1/2"	1/2"-14 NPTF	steel	0.17	5.61	10	50
D4F4-B	1/2"	1/2"-14 NPTF	brass	0.19	7.79	10	50
D4F4-S	1/2"	1/2"-14 NPTF	303 SS	0.17	24.41	10	50
D4BF4	1/2"	G1/2" BSPP	steel	0.17	5.61	10	50
D4F6	1/2"	3/4"-14 NPTF	steel	0.26	9.07	10	50
D6F4	3/4"	1/2"-14 NPTF	steel	0.23	10.64	5	20
D6F6	3/4"	3/4"-14 NPTF	steel	0.34	11.28	5	20
D6F8	3/4"	1"-11 1/2 NPTF	steel	0.47	20.82	5	20



(Female Thread)

DF-Series