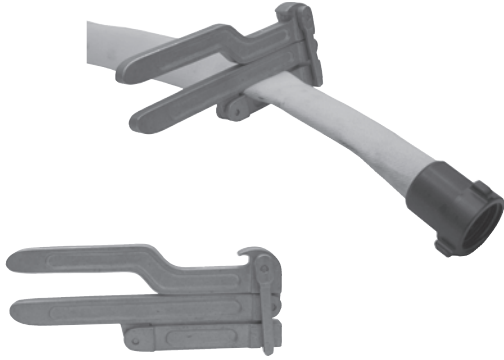


Forestry Hose Clamp and Spanner



- Wildland fire hose clamp is constructed from cast aluminum and brass
- Off-set handle enables the user to easily operate the clamp while wearing gloves
- Designed to be used with 1" and 1½" lightweight wildland fire hoses for pressures up to 200 PSI
- When clamped onto the hose the brass locking device safely holds the clamp in position. A spanner is an integral part of the clamp.
- Overall length 10"

**Dixon
Part #**

FHCS150

Pick Head Fire Axe



- Red trim
- 36" hickory handle
- Listed in the minimum requirements approval guides for outfitting Hose Houses and Hose Cabinets by insurance underwriters.

Description	Dixon Part #	Powhatan Part #
6 lb. Axe Axe Brackets	PHFA6 PHFA-B-A	29-245-00003 ---

Pry Bar



- 48" long steel pry (crow) bar with a pinch point
- Listed in the minimum requirements approval guides for outfitting Hose Houses and Hose Cabinets by insurance underwriters.

**Dixon
Part #**

FCB48

Hose and Ladder Strap



- 23" OAL
- Strap is a flexible woven cotton fabric
- Handles are chromed malleable iron/nickel
- Listed in the minimum requirements approval guides for outfitting Hose Houses and Hose Cabinets by insurance underwriters.

**Dixon
Part #**

HLS

**Powhatan
Part #**

27-248-00001