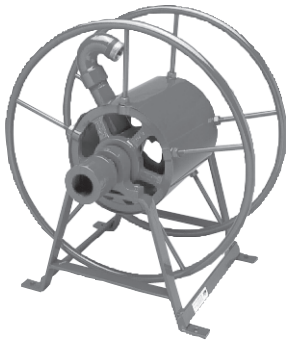




Continuous Flow Hose Reels

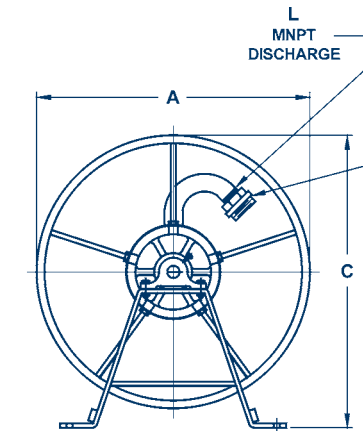
Continuous flow reels allow your non-collapsible hose to always be ready for action, and you will get full flow with any amount of hose deployed from the reel. The delays associated with unloading collapsible hose from dry storage reels or racks are eliminated.



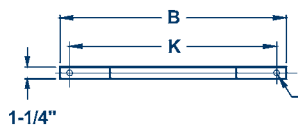
- Red polyester powder coat finish
- Rugged steel construction
- Maximum working pressure: 300 PSI
- Suitable for wall or floor mounting
- Manual rewind
- Factory Mutual approved

Size	Non-Collapsible Hose Capacity	Dixon Part #	Wt. Lbs.
1"	100' of 1" hose 150' of 3/4" hose	FD47-1-100	73
1"	200' of 1" hose 300' of 3/4" hose	FD47-1-200	83
1 1/2"	50' of 1 1/2" hose 75' of 1 1/4" hose	FD47-150-50	80
1 1/2"	100' of 1 1/2" hose 150' of 1 1/2" hose	FD47-150-100	92
1 1/2"	200' of 1 1/2" hose	FD47-150-200	104

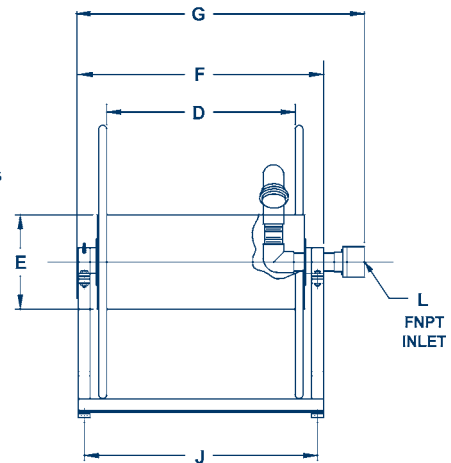
Note: Continuous flow hose reel covers are located on the next page.



Optional Adapters (order separately):
 FM1010F = 1" FNPT x 1" MNST brass
 FM15S15F = 1 1/2" FNPSH X 1 1/2" MNST brass
 FM1515F = 1 1/2" FNPT x 1 1/2" MNST brass



(4) MOUNTING HOLES
5/8" DIA



Part #	Dimensions (inches)									
	A	B	C	D	E	F	G	J	K	L *
FD47-1-100	24"	19"	26"	10"	10"	16"	21"	14-3/4"	17"	1"
FD47-1-200	24"	19"	26"	20"	10"	26"	31"	24-3/4"	17"	1"
FD47-150-50	24"	19"	26"	10"	10"	16"	21"	14-3/4"	17"	1-1/2"
FD47-150-100	24"	19"	26"	20"	10"	26"	31"	24-3/4"	17"	1-1/2"
FD47-150-200	29"	24"	31"	20"	10"	26"	31"	24-3/4"	22"	1-1/2"

* female NPT inlet x male NPT outlet