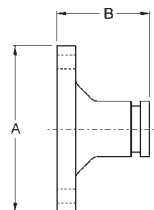


Pipe and Welding Fittings

Flange Adapters - Series FA

Flange adapters are used to connect an ANSI Class 125 and 150 flange to a grooved pipe using a grooved clamp. To assemble to another flange, position bolt heads on the adapter (grooved) side. These adapters provide a rigid one piece connection that can be disconnected by removing the clamp assembly. Ductile iron construction with rust inhibiting galvanized finish.



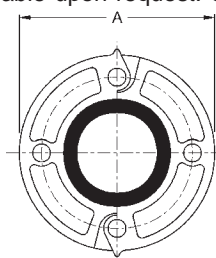
Nominal Size	Pipe O.D.	Max PSI	Flange Dimensions		Bolts		Approx. Weight Lbs.	Part #	Price / Each
			A	B	Qty.	Dia			
2"	2.375"	300	6"	2-3/8"	4	5/8"	2.8	FA20	\$29.00
3"	3.500"	300	7 1/4"	2-3/8"	4	5/8"	5.3	FA30	49.00
4"	4.500"	300	8 1/2"	2-3/8"	8	5/8"	6.4	FA40	62.00
6"	6.625"	300	11"	2-9/16"	8	3/4"	11.5	FA60	114.00
8"	8.625"	300	13 1/4"	3"	8	3/4"	23.0	FA80	140.00

ANSI Split Flange Couplings - Series SF

The split flange coupling is designed to provide a direct connection between a grooved adapter and an ANSI Class 125 and 150 raised face flanged component. It can be used with flat face flanges by removing the raised projections on the outside face of the flange. Ductile iron body with rust inhibiting paint. Buna gaskets are available upon request. **Underwriters listed and Factory Mutual approved**



Interchangeable with:
Victaulic's #741
Grinnell's #7012

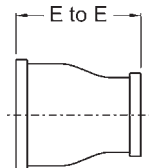


Replacement Gaskets

Nominal Size	Pipe O.D.	Max PSI	Flange Dimensions		Bolts		Approx. Weight Lbs.	Part #	Price / Each	EPDM Gasket Part #	Price / Each
			A	B	Qty.	Dia					
2"	2.375"	300	6"	13/16"	4	5/8"	3.5	ANSI20	\$60.75	FLG200E	\$6.50
2 1/2"	2.875"	300	7"	13/16"	4	5/8"	4.6	ANSI25	65.75	FLG250E	7.50
3"	3.500"	300	7 1/2"	13/16"	4	5/8"	5.1	ANSI30	79.00	FLG300E	8.75
4"	4.500"	300	9"	15/16"	8	5/8"	8.8	ANSI40	105.00	FLG400E	10.00
6"	6.625"	300	11"	1"	8	3/4"	10.6	ANSI60	125.00	FLG600E	15.50
8"	8.625"	300	13 1/2"	1-1/8"	8	3/4"	17.0	ANSI80	160.00	FLG800E	27.25

Reducing Adapters - Series RA

Interchangeable with:
Victaulic's #50
Grinnell's #7072



Grooved End x Grooved End

Nominal Size	Nominal Size	E to E	Approx. Weight Lbs.	Part #	Price / Each
2"	1 1/2"	2.5	0.9	RAGG20150	\$21.00
2 1/2"	2"	2.5	1.1	RAGG25020	22.00
3"	2"	2.5	1.2	RAGG3020	21.00
3"	2 1/2"	2.5	1.5	RAGG30250	26.00
4"	2"	3.0	2.2	RAGG4020	26.00
4"	2 1/2"	3.0	2.4	RAGG40250	29.20
4"	3"	3.0	2.4	RAGG4030	33.00
5"	4"	3.5	4.4	RAGG5040	56.00
6"	2"	4.0	4.0	RAGG6020	63.00
6"	2 1/2"	4.0	4.4	RAGG60250	72.30
6"	3"	4.0	4.6	RAGG6030	66.00
6"	4"	4.0	7.0	RAGG6040	66.00