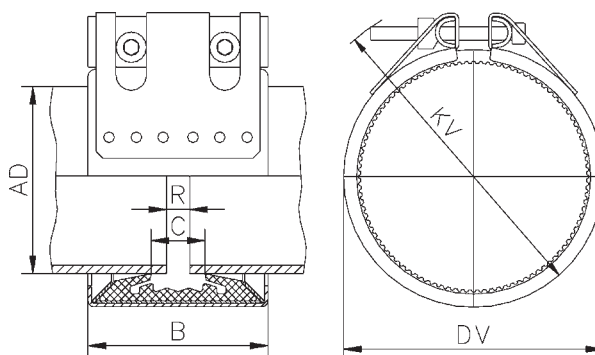


Straub Grip-L Axial Restraint Pipe Couplings

Straub Grip-L couplings are suitable particularly for pipes within the lower pressure range. Applications include, but are not limited to: ship building, water and waste water treatment plants, and industrial process pipework.

Specifications:

- Casing: AISI 316Ti
- Screws: AISI 316 L
- Bolts: AISI 316 Ti
- Anchoring ring: AISI 301
- Sealing sleeve: EPDM standard (NBR and Viton® A1 are also available, contact the factory for additional information)
- EPDM sealing sleeve: temperature range - 4°F to 176°F (-20°C to 80°C)



Size	Pipe O.D. (in.)			Working Pressure PSI	Torque Rating (ft. lbs.)	Coupling Dimensions (in.)		Assembled Dimensions (in.)		Maximum Distance Between Pipe End (R)	Part #	Price/E
	Actual	+	-			B	C	DV	KV			
3/4"	1.05	0.2	-0.2	670	5.5	1.8	0.7	1.7	2.8	0.2	STR20000	\$134.40
1"	1.31	0.2	-0.2	550	5.5	1.8	0.7	2	3	0.2	STR20100	138.30
1 1/2"	1.90	0.2	-0.2	440	11	2.4	1.0	2.6	3.9	0.2	STR20300	158.90
2"	2.37	0.3	-0.2	320	11	3.0	1.5	3.1	4.3	0.4	STR20450	186.05
2 1/2"	2.87	0.3	-0.2	450	15	3.7	1.6	3.8	5.3	0.4	STR20500	237.25
3"	3.50	0.4	-0.4	320	15	3.7	1.6	4.4	5.9	0.4	STR20650	261.25
4"	4.50	0.4	-0.4	232	18	3.7	1.6	5.4	6.6	0.4	STR20900	289.15
5"	5.56	0.6	-0.5	232	30	4.3	2.1	6.5	8.3	0.4	STR21150	428.10
6"	6.63	0.6	-0.7	232	30	4.3	2.1	7.6	9.1	0.4	STR21350	465.60
8"	8.63	0.8	-0.9	232	45	5.6	3.2	9.8	11.6	0.4	STR21400	813.50

SAFETY ALERT

All Straub couplings require the correct use of a torque wrench for a safe and proper installation. Straub couplings must be torqued to the specified value as printed on each individual coupling. Failure to do so can result in serious injury or death.

Not for steam or refrigerant service.

Pipe & Welding

- Joins like or dissimilar pipe materials: steel, galvanized, painted, stainless steel, thin-wall stainless steel, PVC, copper
- Requires no special tools or pipe-end preparation; only a torque wrench is required for a secure and safe pipe connection that seldom needs retightening.
- Highest quality 316 Ti stainless steel construction
- Accommodates up to 5° of pipe misalignment
- Vary gap between pipe ends
- Absorbs vibration, water hammer, and sound
- Special patented grip ring for superior holding power on hard-surfaced pipes
- 5 year limited warranty
- Reusable
- Built to ASTM 1476, Type 2, Class 2 specifications