



Valves

Actuated Valve Accessories

Limit Switches

- Visual position indicator
- 3D open/close indication
- Quick-set cam
- Mechanical SPDT switches (standard)
- Multipoint terminal strip
- Various switch options available
- Cable entry: (2) 1/2" NPT
- Enclosures available:
 - NEMA 4 4/X**
 - > Water and dust tight for indoor or outdoor use
 - > Corrosion resistant
 - NEMA 7**
 - > Water and dust tight for indoor or outdoor use
 - > Corrosion resistant
 - > For use in indoor hazardous locations
 - > Explosion proof



Enclosure	Part #	Price/E
NEMA 4/4X	XLS-B4A0120P	\$424.40
NEMA 7	XLS-B7A0120P	959.10

Other variations are available.

Solenoids

- Pressure range: **30 PSI to 150 PSI**
- Duty cycle: 100% ED
- Voltages available:
 - 12VDC, 24VDC, 24VAC, 48VAC, 110VAC, 220VAC
- Electroless nickel plated spool
- Easy-to-use manual override
- Port sizes: inlet and exhaust 1/4" NPT
- Enclosures available:
 - NEMA 4 4/X**
 - > Water and dust tight for indoor or outdoor use
 - > Corrosion resistant
 - NEMA 7**
 - > Water and dust tight for indoor or outdoor use
 - > Corrosion resistant
 - > For use in indoor hazardous locations
 - > Explosion proof

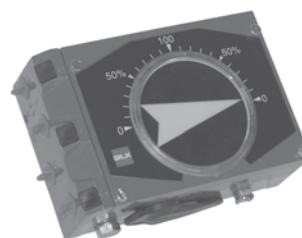


Enclosure	Description	Part #	Price/E
NEMA 4/4X	single coil, 115VAC	XSO-4S4D-0A	\$249.25
NEMA 4/4X	single coil, 24VDC	XSO-4S4B-0A	249.25
NEMA 4/4X	dual coil, 115VAC	XSO-4D4D-0A	406.70
NEMA 4/4X	dual coil, 24VDC	XSO-4D4B-0A	406.70

Other voltages and styles are available.

Positioners

- Air capacity
 - > at 29 PSI (200kPa): 9.5 SCFM
 - > at 87 PSI (600kPa): 28.3 SCFM
 - > at 145 PSI (1MPa): 47.1 SCFM
- Air connections: 1/4" NPT
- Gauges: 1/8" NPT
- Cable entry: 1/2" NPT
- **Electro-Pneumatic**
 - > Input range: 4-20mA (Ri<250ohms)
 - > Supply pressure: 21.8 to 145 PSI (0.15 to 1MPa)
 - > Linearity error: <1.0% f.s
 - > Hysteresis: <0.6% f.s
 - > Repeatability: <0.5% f.s
- **Pneumatic**
 - > Input range: 3 to 15 PSI (20-100kPa)
 - > Supply pressure: < 145 PSI (<1MPa)
 - > Linearity error: <0.7% f.s
 - > Hysteresis: <0.4% f.s
 - > Repeatability: <0.3% f.s



Positioner Type	Part #	Price/E
Electro-Pneumatic	XPO-E4F	\$3022.00
Pneumatic	XPO-P4F	1415.40

Other options are available.

Speed Control Mufflers

- Maximum operating pressure: **300 PSI**
- Operating temperature: **-65°F to 300°F**

NPT Thread Size	Maximum Overall Length	Brass	
		Part #	Price / E
1/8"	1.39	SCM18	\$5.50
1/4"	1.81	SCM28	6.35
3/8"	1.85	SCM38	9.25
1/2"	2.25	SCM48	14.25
3/4"	2.67	SCM68	18.90
1"	2.98	SCM88	30.60



M

Valves