

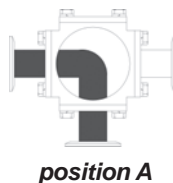


Valves

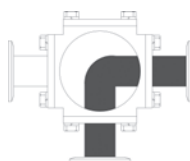
Pneumatically Actuated 3-Way 'L' Port Stainless Ball Valves



Full Port
Female NPT x Female NPT



position A



position B

The actuator and valve are assembled with the default flow paths shown. Refer to page 551 for alternate flow paths.

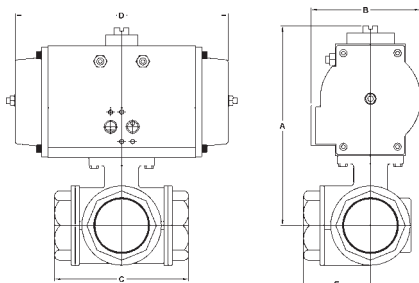
3-Way Stainless Ball Valve

- Self adjusting stem packing
- Blow-out proof stem design
- 100% air tested under water at 80 PSI
- Working pressure for 1/4" to 1": **1000 PSI**
- Working pressure for 1 1/4" to 2": **800 PSI**
- Temperature range: **-20°F to 450°F**
- ISO 5211 mounting pad
- Female NPT ends
- Full port style

Rack and Pinion Actuator

- Bi-directional stops for $\pm 5^\circ$ travel adjustment
- 80 PSI plant air required
- Maximum operating pressure: **120 PSI**
- Operating temperature range: **-40°F to 200°F**
- Hard anodized aluminum body
- NAMUR mounting
- Nickel plated anti-blowout pinion
- Buna-N O-ring seals
- Visual position indication
- Tested to one million cycles

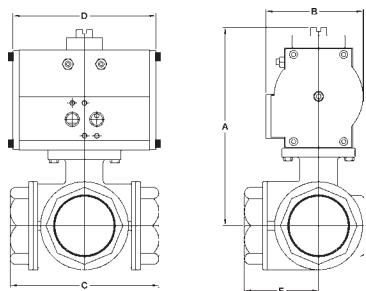
Spring Return



all dimensions are given in inches

Size	A	B	C	D	E	Part #	Price/E
1/4"	5.35	3.20	2.83	7.10	1.41	BV3IGLF-0251BBC	\$759.75
3/8"	5.35	3.20	2.83	7.10	1.41	BV3IGLF-0381BBC	759.75
1/2"	5.55	3.20	3.26	7.10	1.63	BV3IGLF-0501BBC	800.00
3/4"	6.30	3.74	3.89	7.45	1.94	BV3IGLF-0751BBC	991.10
1"	6.83	3.74	4.40	7.45	2.20	BV3IGLF-1001BBC	1293.75
1 1/4"	7.13	3.74	4.92	7.45	2.46	BV3IGLF-1251BBC	1292.55
1 1/2"	8.43	4.69	5.86	9.10	2.93	BV3IGLF-1501BBC	1724.55
2"	9.97	5.53	6.85	12.99	3.42	BV3IGLF-2001BBC	2669.10

Double Acting



all dimensions are given in inches

Size	A	B	C	D	E	Part #	Price/E
1/4"	5.35	3.20	2.83	7.10	1.41	BV3IGLF-0251BCC	\$561.50
3/8"	5.35	3.20	2.83	7.10	1.41	BV3IGLF-0381BCC	561.50
1/2"	5.55	3.20	3.26	7.10	1.63	BV3IGLF-0501BCC	601.75
3/4"	6.30	3.74	3.89	7.45	1.94	BV3IGLF-0751BCC	790.20
1"	6.83	3.74	4.40	7.45	2.20	BV3IGLF-1001BCC	905.25
1 1/4"	7.13	3.74	4.92	7.45	2.46	BV3IGLF-1251BCC	1173.55
1 1/2"	8.43	4.69	5.86	9.10	2.93	BV3IGLF-1501BCC	1417.95
2"	9.97	5.53	6.85	12.99	3.42	BV3IGLF-2001BCC	2210.50

A wide variety of switches, solenoids, positioners, etc., are available. Contact the factory at 800.789.1718 for details.

SAFETY
ALERT

Caution !

SAFETY
ALERT

Even though there are torque safety factors built into our automated ball valve packages, actual service conditions must also be considered when selecting the proper product for the appropriate application.

For example: Severe service conditions such as dirty water, dirty air, all slurries, raw sewage water, oils, and other viscous fluids can have a dramatic affect in raising the torque requirements of ball valves as much as 75% and therefore larger actuators may be required. Please consult the factory when dealing with these types of applications.