



Valves

Pneumatically Actuated 3 Piece Stainless Ball Valves

Full Port

Female NPT x Female NPT



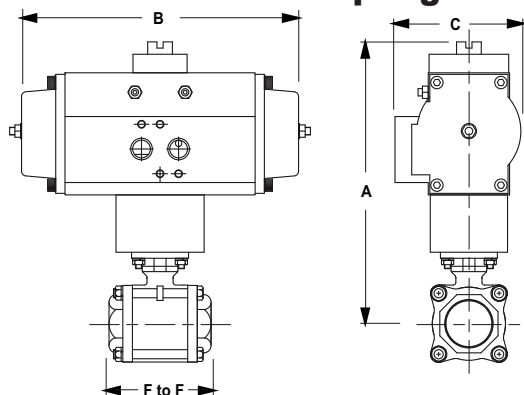
3-Piece Stainless Ball Valve

- Stainless steel stem
- CF8M body and ball
- 15% glass reinforced RTFE seats
- 1/2" - 2" rated to **1000 PSI** WOG; 3" rated to **800 PSI** WOG
- Temperature range: **-40°F** to **400°F**
- ISO 5211 mounting pad
- Swing out in-line easy maintenance
- Self-adjusting stem packing with Belleville washers

Rack and Pinion Actuator

- Bi-directional stops for $\pm 5^\circ$ travel adjustment
- 80 PSI plant air required
- Maximum operating pressure: **120 PSI**
- Operating temperature range: **-40°F** to **200°F**
- Hard anodized aluminum body
- NAMUR mounting
- Nickel plated anti-blowout pinion
- Buna-N O-rings
- Visual position indication
- Tested to one million cycles

Spring Return - 3 Piece (normally closed)

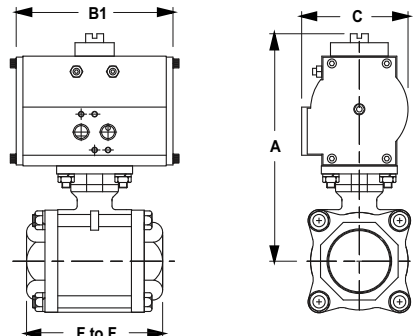


all dimensions are given in inches

Size	F to F	A	B	C	Part #	Price/E
1/2"	2.6	7.0	7.7	3.2	BV2IG-05011-BBC	\$597.30
3/4"	3.0	7.2	7.7	3.2	BV2IG-07511-BBC	608.20
1"	3.4	6.1	7.7	3.2	BV2IG-10011-BBC	602.40
1 1/4"	4.0	6.3	7.7	3.2	BV2IG-12511-BBC	639.20
1 1/2"	4.7	7.7	8.1	3.7	BV2IG-15011-BBC	783.35
2"	5.2	8.8	8.1	3.7	BV2IG-20011-BBC	872.60
3"	7.2	10.2	9.8	4.7	BV2IG-30011-BBC	1516.40

* bracket and coupler required for 1/2" and 3/4" spring return actuator line art shown with bracket and coupler

Double Acting - 3 Piece



all dimensions are given in inches

Size	F to F	A	B1	C	Part #	Price/E
1/2"	2.6	5.0	4.7	2.4	BV2IG-05011-BCC	\$370.00
3/4"	3.0	5.2	4.7	2.4	BV2IG-07511-BCC	380.95
1"	3.4	6.1	5.7	3.2	BV2IG-10011-BCC	509.35
1 1/4"	4.0	6.3	5.7	3.2	BV2IG-12511-BCC	546.15
1 1/2"	4.7	7.7	5.9	3.7	BV2IG-15011-BCC	667.80
2"	5.2	8.0	5.9	3.7	BV2IG-20011-BCC	757.05
3"	7.2	10.2	7.2	4.7	BV2IG-30011-BCC	1391.30

A wide variety of switches, solenoids, positioners, etc., are available. Contact the factory at 800.789.1718 for details.

SAFETY
ALERT

Caution !

SAFETY
ALERT

Even though there are torque safety factors built into our automated ball valve packages, actual service conditions must also be considered when selecting the proper product for the appropriate application.

For example: Severe service conditions such as dirty water, dirty air, all slurries, raw sewage water, oils, and other viscous fluids can have a dramatic affect in raising the torque requirements of ball valves as much as 75% and therefore larger actuators may be required. Please consult the factory when dealing with these types of applications.