

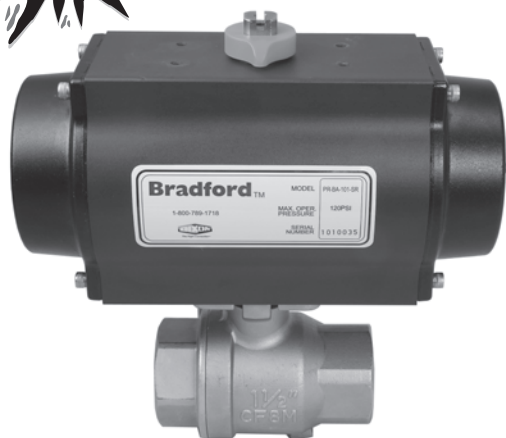


Valves

Pneumatically Actuated 2 Piece Stainless Ball Valves

Full Port

Female NPT x Female NPT



2-Piece Stainless Ball Valve

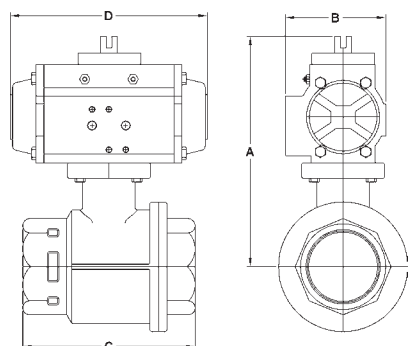
- CF8M stem and ball
- RTFE seats and seals
- Pressure rating: **1000 PSI** WOG
- Temperature range: **-40°F to 450°F**
- ISO 5211 mounting pad
- Blow-out proof stem
- Spring loaded Belleville washers in stem packing

Rack and Pinion Actuator

- Bi-directional stops for $\pm 5^\circ$ travel adjustment
- 80 PSI plant air required
- Maximum operating pressure: **120 PSI**
- Operating temperature range: **-40°F to 200°F**
- Hard anodized aluminum body
- NAMUR mounting
- Nickel plated anti-blowout pinion
- Buna-N O-ring seals
- Visual position indication
- Tested to one million cycles

Spring Return (normally closed)

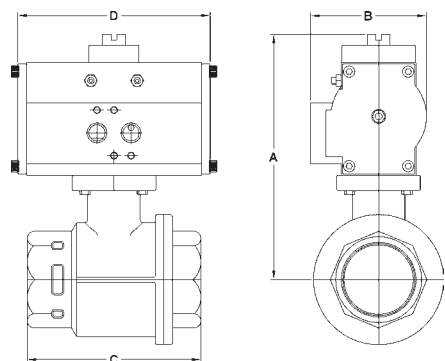
all dimensions are given in inches



Size	A	B	C	D	Part #	Price/E
1/4"	5.21	2.80	2.56	5.49	BV2HG-02511-BBC	\$558.55
3/8"	5.21	2.80	2.56	5.49	BV2HG-03811-BBC	558.55
1/2"	5.16	2.80	2.95	5.49	BV2HG-05011-BBC	558.55
3/4"	5.26	2.80	3.15	5.49	BV2HG-07511-BBC	575.35
1"	6.64	3.74	3.54	8.09	BV2HG-10011-BBC	638.85
1 1/4"	6.84	3.74	4.33	8.09	BV2HG-12511-BBC	697.70
1 1/2"	8.14	4.69	4.72	9.84	BV2HG-15011-BBC	898.35
2"	8.69	4.69	5.51	9.84	BV2HG-20011-BBC	988.05
2 1/2"	9.54	5.53	7.28	13.98	BV2HG-25011-BBC	1641.75
3"	11.39	7.29	8.07	16.61	BV2HG-30011-BBC	2350.40

Double Acting

all dimensions are given in inches



Size	A	B	C	D	Part #	Price/E
1/4"	4.25	1.77	2.56	4.33	BV2HG-02511-BCC	\$398.90
3/8"	4.25	1.77	2.56	4.33	BV2HG-03811-BCC	398.90
1/2"	4.20	1.77	2.95	4.33	BV2HG-05011-BCC	398.90
3/4"	4.30	1.77	3.15	4.33	BV2HG-07511-BCC	415.70
1"	5.89	3.20	3.54	5.68	BV2HG-10011-BCC	555.75
1 1/4"	6.09	3.20	4.33	5.68	BV2HG-12511-BCC	614.60
1 1/2"	7.24	3.74	4.72	5.87	BV2HG-15011-BCC	779.30
2"	7.79	3.74	5.51	5.87	BV2HG-20011-BCC	869.00
2 1/2"	8.75	4.69	7.28	7.20	BV2HG-25011-BCC	1513.40
3"	10.01	5.53	8.07	10.22	BV2HG-30011-BCC	1891.80

A wide variety of switches, solenoids, positioners, etc., are available. Contact the factory at 800.789.1718 for details.

SAFETY
ALERT

Caution !

SAFETY
ALERT

Even though there are torque safety factors built into our automated ball valve packages, actual service conditions must also be considered when selecting the proper product for the appropriate application.

For example: Severe service conditions such as dirty water, dirty air, all slurries, raw sewage water, oils, and other viscous fluids can have a dramatic affect in raising the torque requirements of ball valves as much as 75% and therefore larger actuators may be required. Please consult the factory when dealing with these types of applications.