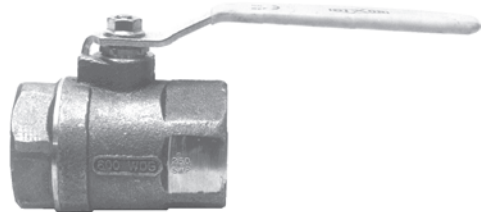




Valves

250 Lb. Steam Ball Valves



Female NPT x Female NPT

- Recommended for use with fluids with widely varying temperatures and/or thermal expansion rates
- Rated to **600 PSIG; 250 PSI** saturated steam
- Vacuum service to 29 inches Hg
- Threaded bronze valve
- 316 stainless steel ball and stem
- Multi-fill RPTFE seats
- Multi-fill stuffing box ring
- High temperature MTFE stem packing
- Blow-out proof stem design
- Adjustable packing gland
- Maximum temperature rating **406°F**

Size	Port	Part #	Price / E
1/2"	full	BBV50ST	\$56.00
3/4"	standard	BBV75ST	90.35
1"	standard	BBV100ST	106.00
2"	standard	BBV200ST	294.25

Carbon Steel Ball Valves

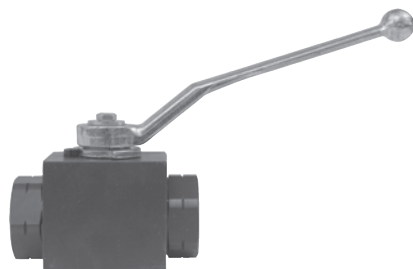


Female NPT x Female NPT

- For control of air, water, oil and gas in hose or pipe lines. For other services, please contact the factory.
- Rated to **150 PSI** saturated steam
- 1/4" - 1" rated to **2000 PSI**; 1 1/4" - 2" rated to **1500 PSI**
- Carbon steel
- Chromium plated ball
- RPTFE seats and seals
- Blow-out proof stem
- Adjustable packing gland

Size	Port	Part #	Price / E
1/4"	full	IBV25	\$48.00
3/8"	full	IBV38	48.00
1/2"	standard	IBV50	48.00
3/4"	standard	IBV75	55.35
1"	standard	IBV100	74.00
1-1/4"	standard	IBV125	112.85
1-1/2"	standard	IBV150	156.35
2"	standard	IBV200	203.00

High Pressure Full-Bore Hydraulic Ball Valves



Female NPTF x Female NPTF

- Blow-out proof stem
- Rugged construction
- Viton® shaft seals
- Female NPTF
- Also available in SAE ORB thread

NPT Size	Carbon Steel			Stainless Steel		
	Part #	Price / E	PSI	Part #	Price / E	PSI
1/4"	HPBV25	\$54.30	7350	HPBV25SS	\$296.75	7250
3/8"	HPBV38	57.35	7350	HPBV38SS	363.25	7250
1/2"	HPBV12	62.25	7350	HPBV12SS	386.25	7250
3/4"	HPBV34	123.45	5880	HPBV34SS	758.00	5800
1"	HPBV10	147.35	5145	HPBV10SS	894.00	5075
1 1/4"	HPBV125	380.45	5880	---	---	---
1 1/2"	HPBV150	453.25	5880	---	---	---
2"	HPBV200	674.45	5880	---	---	---