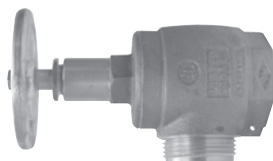




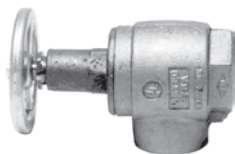
## Fire Hose Fittings



### Cast Brass Angle Hose Valves



female x male



female x female

- Underwriters Listed and Factory Mutual approved
- New York City Board of Standards and Appeals approved
- For pressures up to 300 lbs.
- Cast brass with an aluminum wheel

Description	Part #	Price / Each	Qty
1½" female NPT x 1½" male NST (NH)	<b>AV150</b>	<b>\$195.00</b>	10
2½" female NPT x 2½" male NST (NH)	<b>AV250</b>	<b>315.00</b>	6
1½" female NPT x 1½" female NPT	<b>AVF150</b>	<b>195.00</b>	10
2½" female NPT x 2½" female NPT	<b>AVF250</b>	<b>315.00</b>	6
1½" aluminum replacement wheel	<b>AV150-W</b>	<b>27.85</b>	---
2½" aluminum replacement wheel	<b>AV250-W</b>	<b>39.30</b>	---



### Forged Brass Angle Hose Valves



female x male



female x female

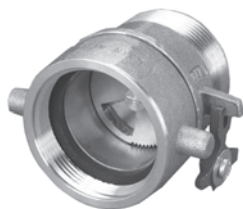
- Underwriters Listed and Factory Mutual approved
- For use with a fire hose rack assembly, or as a fire department outlet connection
- For pressures up to **300 PSI**
- Forged brass with a aluminum, red painted handwheel

Description	Part #	Price / Each	Qty
1½" female NPT x 1½" male NST (NH)	<b>AV151</b>	<b>\$112.00</b>	1
2½" female NPT x 2½" male NST (NH)	<b>AV251</b>	<b>225.00</b>	1
1½" female NPT x 1½" female NPT	<b>AVF151</b>	<b>112.00</b>	1
2½" female NPT x 2½" female NPT	<b>AVF251</b>	<b>225.00</b>	1
red hand wheel for AV151	<b>AV151-WR</b>	<b>12.00</b>	---
red hand wheel for AV251	<b>AV251-WR</b>	<b>24.25</b>	---



### Adjustable Pressure Restricting Device

- Intended for installation on Class I or Class III standpipe system hose outlets
- Use of this device restricts pressure in the piping system to such a degree that hose lines can be handled by persons untrained in the handling of heavy fire streams
- Listed by the New York City Board of Standards and Appeals
- 1½" is not U/L listed
- Cast brass
- *Note: Restricts under flow conditions only*



Female	Male	WP PSI	Dixon Part #	Powhatan Part #	Price / Each
1½" NH	1½" NH	<b>175</b>	<b>APRD150F</b>	18-255-00102	<b>\$287.45</b>
2½" NH	2½" NH	<b>175</b>	<b>APRD250F</b>	18-255-00011	<b>331.20</b>
2½" NYC	2½" NYC	<b>175</b>	<b>APRD250NYC</b>	18-255-00015	<b>331.20</b>
2½" NYFD	2½" NYFD	<b>175</b>	<b>APRD250NYFD</b>	18-255-00019	<b>331.20</b>

Other threads and finishes, including chrome plated, are also available. *Consult factory for pricing and availability.*