

Nitrile Covered Fire Hose - Heavy Duty - Yellow

Outer construction:
Thick ribbed nitrile

Tube construction:
Nitrile

Proof pressure:

- 1½" - 3" - **600 PSI**
- 4" - **400 PSI**
- 5" - **400 PSI**
- 6" - **300 PSI**

Service test pressure:

- 1½" - 3" - **300 PSI**
- 4" - **200 PSI**
- 5" - **200 PSI**
- 6" - **150 PSI**

Working pressure:

- 1½" - 3" - **270 PSI**
- 4" - **180 PSI**
- 5" - **180 PSI**
- 6" - **135 PSI**

Uncoupled

- Extruded interlocking matrix fire hose with 100% synthetic circular woven polyester reinforcement.
- Ideal for heavy-duty washdown, refineries and power plants.
- Heavy ribbed for severe service

Consult the factory for pricing and availability for any of the following features:

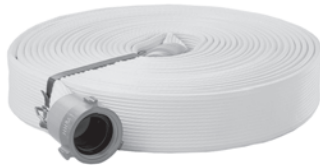
- 25' lengths
- Other colors, threads and configurations
- Hoses coupled with field reattachable couplings (*Flat Seal*)



uncoupled

Size	Bowl	Length	Part #	Price / Each
1½"	1-13/16"	50'	H615Y50UC	\$389.35
2"	2-3/16"	50'	H620Y50UC	565.70
2½"	2-13/16"	50'	H625Y50UC	655.05
3"	3-5/16"	50'	H630Y50UC	750.30
4"	4-5/16"	50'	H440Y50UC	1035.10
6"	6-5/16"	50'	H360Y50UC	1667.30

Coupled with female and male expansion ring couplings



coupled

Size	Length	Part #	Rocker Lug Aluminum NST (NH) RAF	Rocker Lug Brass NST (NH) RBF	Pin Lug Brass NST (NH) PBF	Rocker Lug Aluminum NPSH RAS
1½"	50'	H615Y50	\$448.35	\$475.85	\$475.85	\$448.35
2½"	50'	H625Y50	743.30	804.05	804.05	743.30

Coupled with female and male segmented collar style couplings



coupled

Size	Length	STORZ thread size	Part #	Price
4"	50'	4"	H440Y50SZ	\$1163.55
5"	50'	5"	H450Y50SZ	1544.15

Red Elastomer Covered Fire Hose

Ideal for industrial, petrochemical and HAZMAT use

Outer construction:

Red elastomeric polymer (urethane)

Tube construction:

Black extruded elastomer (urethane)

Proof pressure: **500 PSI**

Servicetest pressure: **250 PSI**

Working pressure: **235 PSI**

Consult the factory for pricing and availability for any of the following features:

- 25' lengths
- Other threads and configurations
- Hoses coupled with field reattachable couplings (*Flat Seal*).



Coupled with female and male expansion ring couplings

Size	Length	Part #	Rocker Lug Aluminum NST (NH) RAF	Rocker Lug Brass NST (NH) RBF	Rocker Lug Aluminum NPSH RAS	Rocker Lug Brass NPSH RBS
1½"	50'	N515-50	\$452.00	\$473.90	\$452.00	\$473.90
1½"	100'	N515100	813.15	872.00	813.15	872.00