

## Fire Hose Fittings

### 800# Double Jacket All Polyester Fire Hose

**Outer construction:** Double jacket, all polyester  
**Tube construction:** EPDM rubber lining

*Consult the factory for pricing and availability for any of the following features:*

- 75' lengths
- Other threads and configurations

Proof pressure: **800 PSI**  
 Service test pressure: **400 PSI**  
 Working pressure: **360 PSI**

**Coupled with female and male expansion ring couplings \***

Size	Length	Part #	Rocker Lug Aluminum NST (NH) RAF	Rocker Lug Brass NST (NH) RBF	Pin Lug Brass NST (NH) PBF	Rocker Lug Aluminum NPSH RAS
1½"	25'	<b>D815-25</b>	<b>\$194.15</b>	---	---	---
1½"	50'	<b>D815-50</b>	<b>315.25</b>	<b>\$324.50</b>	<b>\$324.50</b>	<b>\$315.25</b>
1½"	100'	<b>D815100</b>	<b>581.90</b>	<b>591.00</b>	<b>591.00</b>	<b>581.90</b>
2½"	25'	<b>D825-25</b>	<b>320.20</b>	---	---	---
2½"	50'	<b>D825-50</b>	<b>524.05</b>	<b>565.20</b>	<b>565.20</b>	<b>524.05</b>
2½"	100'	<b>D825100</b>	<b>922.95</b>	<b>966.25</b>	<b>966.25</b>	<b>922.95</b>



\* Double jacket hoses are **not** recommended for use with field reattachable couplings (*Flat Seal*).

### 800# Double Jacket All Polyester Fire Hose - Yellow Impregnated

**Outer construction:** Double jacket, all polyester  
**Tube construction:** Black extruded synthetic rubber

*Consult the factory for pricing and availability for any of the following features:*

- Other lengths, threads, colors and configurations

**Impregnation:** Yellow

Proof pressure: **800 PSI**  
 Service test pressure: **400 PSI**  
 Working pressure: **360 PSI**

**Coupled with female and male NST (NH) thread, rocker lug, aluminum expansion ring couplings \***

Size	Length	Part #	Price / Each
1½"	50'	<b>D815Y50RAF</b>	<b>\$330.90</b>
1½"	100'	<b>D815Y100RAF</b>	<b>568.50</b>
2½"	50'	<b>D825Y50RAF</b>	<b>552.75</b>
2½"	100'	<b>D825Y100RAF</b>	<b>919.50</b>



\* Double jacket hoses are **not** recommended for use with field reattachable couplings (*Flat Seal*).

### Blue Double Jacket Potable Water Hose

**Outer construction:** Double jacket, all polyester  
**Tube construction:** Thermoplastic

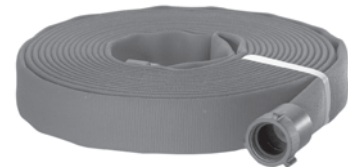
• NSF approved materials for potable water

**Impregnation:** Blue (color coded for water)

Proof pressure: **600 PSI**  
 Service test pressure: **300 PSI**  
 Working pressure: **270 PSI**

**Coupled with female and male NPSH thread, rocker lug, brass expansion ring couplings**

Size	Length	Part #	Price / Each
1½"	50'	<b>PW615B50RBS</b>	<b>\$499.70</b>
1½"	100'	<b>PW615B100RBS</b>	<b>738.35</b>
2½"	50'	<b>PW625B50RBS</b>	<b>831.60</b>
2½"	100'	<b>PW625B100RBS</b>	<b>1180.50</b>



Fire Hose Fittings