



Fire Hose Fittings

Mill Hose - White

Ideal for open end discharge applications. **Not intended for fire fighting service.**

Outer construction:

Single jacket, all synthetic

Tube construction:

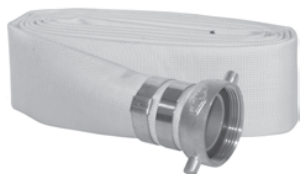
Black, extruded synthetic rubber

Consult the factory for pricing and availability for any of the following features:

- Additional lengths
- Other configurations

Rated pressure: **250 PSI**

Working pressure: **112 PSI**



**Coupled with NPSH female and male King short shank couplings, preformed clamps
Aluminum shank with brass pin lug swivel nut**

Size	Clamps	Length	Part #	Price / Each
1½"	2	25'	M15-25KAS	\$107.10
1½"	2	50'	M15-50KAS	152.95
2"	2	25'	M20-25KAS	126.95
2"	2	50'	M20-50KAS	184.30
2½"	4	25'	M25-25KAS	149.20
2½"	4	50'	M25-50KAS	231.00
3"	4	25'	M30-25KAS	184.80
3"	4	50'	M30-50KAS	286.65

**Coupled with NST (NH) female and male King short shank couplings, preformed clamps
Aluminum shank with brass pin lug swivel nut**



Size	Clamps	Length	Part #	Price / Each
1½"	2	25'	M15-25KAF	\$115.30
1½"	2	50'	M15-50KAF	161.20
2½"	4	25'	M25-25KAF	158.05
2½"	4	50'	M25-50KAF	239.40

Coupled with female and male (C & E) global aluminum cam and groove, preformed clamps



Size	Clamps	Length	Part #	Price / Each
1½"	2	25'	M15-25GAX	\$118.60
1½"	2	50'	M15-50GAX	164.45
2"	2	25'	M20-25GAX	139.65
2"	2	50'	M20-50GAX	196.90
2½"	4	25'	M25-25GAX	163.20
2½"	4	50'	M25-50GAX	246.75
3"	4	25'	M30-25GAX	198.45
3"	4	50'	M30-50GAX	300.45

Fire Hose
Fittings