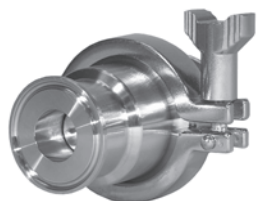




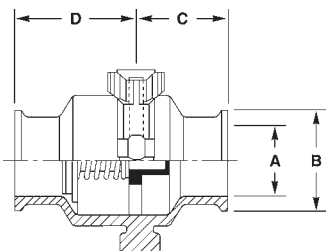
Bradford™ Sanitary Fittings

3 Spring Check Valves



This spring check valve is machined and polished to 3A standards. It can be installed vertically or horizontally. The clamp assembly design allows quick and easy cleaning. The valve features a special design to prevent even low pressure leak through.

- CF-8M (316) stainless steel
- FKM gaskets
- Maximum operating pressure **145 PSI**
- Operating temperature range of **0°F to 200°F**
- Full size flow plate with a long bushing helps minimize stem wear



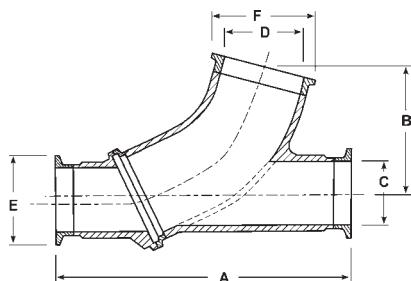
Size	Dimensions				<i>(CF8M) 316 stainless steel</i>	
	A	B	C	D	Part #	Price / E
1/2"	0.370	0.992	1.1	1.6	B45MP-R50	\$456.95
3/4"	0.620	0.992	1.1	1.6	B45MP-R75	513.35
1"	0.870	1.988	1.7	2.3	B45MP-R100	577.95
1 1/2"	1.370	1.988	1.7	2.3	B45MP-R150	526.85
2"	1.870	2.516	1.7	2.3	B45MP-R200	666.35
2 1/2"	2.370	3.051	1.7	2.3	B45MP-R250	1036.30
3"	2.870	3.582	1.7	2.3	B45MP-R300	1229.95
4" *	3.834	4.682	2.2	2.7	B45MP-R400	1765.75

* 4 inch valve uses bolted construction
Repair kits are available

Ball Check Valves

When liquid flows through the valve, the ball is forced into the branch of the valve allowing full fluid flow. When the liquid stops, equalizing the pressure, the ball drops back into the seat, preventing backflow. Should reverse flow occur, the differential pressure will cause the ball to seat firmly against the seat preventing leakage.

- Two piece construction for easier alignment during installation
- Various end configurations available: clamp, weld, I-line, Q-line, bevel seat and John Perry
- Polished ID and OD to 3A standards
- All metal contact surfaces of 316 (CF8M) stainless steel construction
- Sizes from 1 1/2" - 3"
- Air blow check valve can be added (see air blow for sizing)
- PTFE ball



Size	Dimensions						Seating Pressure Vertical (PSI)	<i>(CF8M) 316 stainless steel</i>	
	A	B	C	D	E	F		Part #	Price / E
1 1/2"	7.5	3.3	1.365	1.875	1.984	2.516	3.6	B45BY-R150	\$832.55
2"	8.5	3.9	1.865	2.335	2.516	3.047	2.6	B45BY-R200	1039.40
2 1/2"	10.0	4.5	2.370	2.870	3.047	3.579	1.6	B45BY-R250	1366.50
3"	11.5	5.3	2.870	3.834	3.579	4.682	1.9	B45BY-R300	2229.80

Repair kits are available