

## Clamp Butterfly Valves

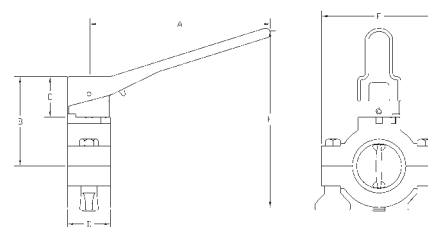
- This valve is only 1-3/8" wide on all sizes
- The valve will use only 3/4" of line space
- The grooved clamp housing connects directly to any sanitary clamp style fitting.
- Easy assembly uses a hex key for the handle and wing nuts to secure and seal the housing onto your lines.
- Actuation available: double acting, spring return and electric



Size	(CF8M) 316 stainless steel with silicone seal		(CF8M) 316 stainless steel with Viton® seal		(CF8M) 316 stainless steel with EPDM seal	
	Part #	Price / E	Part #	Price / E	Part #	Price / E
1"	<b>B5102S100-A</b>	<b>\$195.70</b>	<b>B5102V100-A</b>	<b>\$241.80</b>	<b>B5102E100-A</b>	<b>\$195.70</b>
1½"	<b>B5102S150-A</b>	<b>195.70</b>	<b>B5102V150-A</b>	<b>239.55</b>	<b>B5102E150-A</b>	<b>195.70</b>
2"	<b>B5102S200-A</b>	<b>238.10</b>	<b>B5102V200-A</b>	<b>292.55</b>	<b>B5102E200-A</b>	<b>238.10</b>
2½"	<b>B5102S250-A</b>	<b>307.35</b>	<b>B5102V250-A</b>	<b>375.25</b>	<b>B5102E250-A</b>	<b>307.35</b>
3"	<b>B5102S300-A</b>	<b>363.65</b>	<b>B5102V300-A</b>	<b>439.30</b>	<b>B5102E300-A</b>	<b>363.65</b>
4"	<b>B5102S400-A</b>	<b>531.55</b>	<b>B5102V400-A</b>	<b>637.75</b>	<b>B5102E400-A</b>	<b>531.55</b>

**Note:** Valves can be automated, call the factory for details. Repair kits are available.

Size	Dimensions						Break Torque (inch lbs.)	PSI @ 70°F
	A	B	C	D	E	F		
1"	5.6	2.8	1.3	1.3	3.6	5.6	125	<b>140</b>
1½"	5.6	2.8	1.3	1.3	3.6	5.6	185	<b>140</b>
2"	5.6	3	1.3	1.3	4.1	6.1	200	<b>120</b>
2½"	5.6	3.3	1.3	1.3	4.6	6.6	260	<b>120</b>
3"	5.6	3.6	1.3	1.3	5.3	7.1	350	<b>100</b>
4"	5.6	4.1	1.3	1.3	6.4	8.2	995	<b>70</b>



## B5104 series Butterfly Valves

- 316L stainless steel construction
- Push handle counter clockwise design
- Low resistance to flow
- Bi-directional flow
- Suitable for low and medium viscosity fluids
- Self draining
- All wetted surfaces are sanitary finished to < 32 Ra



Size	(CF8M) 316 stainless steel with silicone seal		(CF8M) 316 stainless steel with FKM seal		(CF8M) 316 stainless steel with EPDM seal	
	Part #	Price / E	Part #	Price / E	Part #	Price / E
1"	<b>B5104S100CC-D</b>	<b>\$286.25</b>	<b>B5104V100CC-D</b>	<b>\$317.60</b>	<b>B5104E100CC-D</b>	<b>\$286.25</b>
1½"	<b>B5104S150CC-D</b>	<b>290.45</b>	<b>B5104V150CC-D</b>	<b>319.80</b>	<b>B5104E150CC-D</b>	<b>290.45</b>
2"	<b>B5104S200CC-D</b>	<b>329.70</b>	<b>B5104V200CC-D</b>	<b>366.60</b>	<b>B5104E200CC-D</b>	<b>329.70</b>
2½"	<b>B5104S250CC-D</b>	<b>388.85</b>	<b>B5104V250CC-D</b>	<b>434.45</b>	<b>B5104E250CC-D</b>	<b>388.85</b>
3"	<b>B5104S300CC-D</b>	<b>504.60</b>	<b>B5104V300CC-D</b>	<b>556.70</b>	<b>B5104E300CC-D</b>	<b>504.60</b>
4"	<b>B5104S400CC-D</b>	<b>687.70</b>	<b>B5104V400CC-D</b>	<b>760.60</b>	<b>B5104E400CC-D</b>	<b>687.70</b>

**Note:** Valves can be automated, call the factory for details. Repair kits are available.

Size	Dimensions							Break Torque (inch lbs.)	PSI @ 70°F
	A	B	C	D	E	F	G		
1"	6.6	2.9	1.2	1.9	3	0.9	3.1	50	<b>140</b>
1½"	6.6	2.9	1.2	1.9	3	1.4	3.1	60	<b>140</b>
2"	6.6	3.2	1.2	1.9	3	1.9	3.7	175	<b>140</b>
2½"	6.6	3.4	1.2	1.9	3	2.4	4.2	250	<b>110</b>
3"	6.6	3.7	1.2	1.9	3	2.9	4.8	300	<b>110</b>
4"	9.4	4.7	1.7	1.5	3.5	3.8	5.9	350	<b>85</b>

