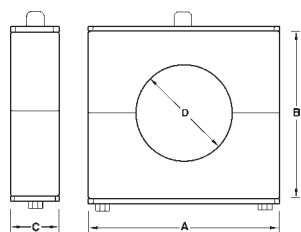


Tube Hangers

Block Tube Hangers with hang plate - **B24**HAP**



Tube OD	Dimensions			Polypropylene Block		Santoprene Block	
	A	B	C	Part #	Price / E	Part #	Price / E
½"	1.880	1.380	1.190	B24PPHAP-G50	\$21.65	B24SPHAP-G50	\$25.55
¾"	1.880	1.380	1.190	B24PPHAP-G75	21.65	B24SPHAP-G75	25.55
1"	3.340	2.630	1.190	B24PPHAP-G100	39.25	B24SPHAP-G100	46.00
1½"	3.340	2.630	1.190	B24PPHAP-G150	39.25	B24SPHAP-G150	46.00
2"	3.340	2.630	1.190	B24PPHAP-G200	39.25	B24SPHAP-G200	46.00
2½"	5.000	4.380	1.190	B24PPHAP-G250	61.25	B24SPHAP-G250	67.35
3"	5.000	4.380	1.190	B24PPHAP-G300	61.25	B24SPHAP-G300	67.35
4"	5.770	4.800	1.190	B24PPHAP-G400	98.15	B24SPHAP-G400	108.00

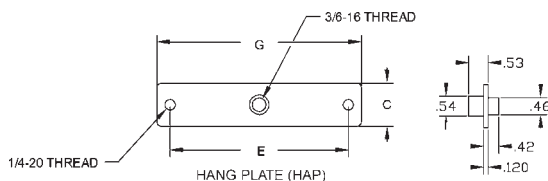


Polypropylene (PP)

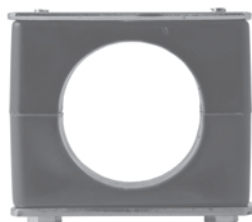
- Maximum temperature: **212°F**

Santoprene (SP)

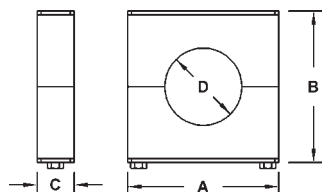
- FDA approved material
- Maximum temperature: **302°F**



Block Tube Hangers with standard weld plate - **B24**STW**



Tube OD	Dimensions			Polypropylene Block		Santoprene Block	
	A	B	C	Part #	Price / E	Part #	Price / E
½"	1.880	1.380	1.190	B24PPSTW-G50	\$32.75	B24SPSTW-G50	\$38.55
¾"	1.880	1.380	1.190	B24PPSTW-G75	32.75	B24SPSTW-G75	38.55
1"	3.340	2.630	1.190	B24PPSTW-G100	40.00	B24SPSTW-G100	46.90
1½"	3.340	2.630	1.190	B24PPSTW-G150	40.00	B24SPSTW-G150	46.90
2"	3.340	2.630	1.190	B24PPSTW-G200	40.00	B24SPSTW-G200	46.90
2½"	5.000	4.380	1.190	B24PPSTW-G250	62.45	B24SPSTW-G250	68.65
3"	5.000	4.380	1.190	B24PPSTW-G300	62.45	B24SPSTW-G300	68.65
4"	5.770	4.800	1.190	B24PPSTW-G400	100.10	B24SPSTW-G400	110.10

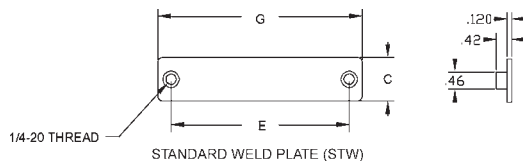


Polypropylene (PP)

- Maximum temperature: **212°F**

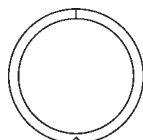
Santoprene (SP)

- FDA approved material
- Maximum temperature: **302°F**



K
Sanitary Fittings

ABS Sleeves - **13PS**



Size	Part Number	Price / Each	Size	Part Number	Price / Each
½"	13PS-50	\$6.35	2½"	13PS-250	\$7.45
¾"	13PS-75	6.35	3"	13PS-300	7.95
1"	13PS-100	5.10	4"	13PS-400	9.80
1½"	13PS-150	5.10	6"	13PS-600	23.30
2"	13PS-200	5.10	8"	13PS-800	30.65

- Maximum temperature: **230°F**