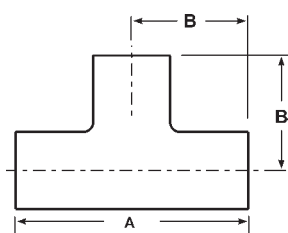




Bradford™ Sanitary Fittings

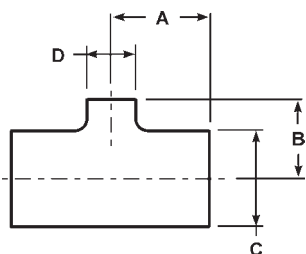
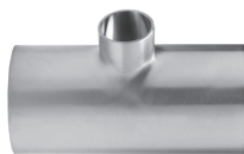
Butt Weld Tees

3 Butt Weld Long Tees, #7 finish - **B7W**



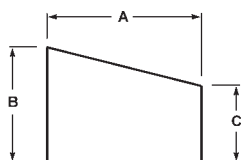
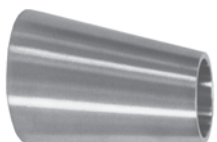
Tube OD	Dimensions		Nom. Wall	polished ID/OD 304 Stainless Steel		polished ID/OD 316L Stainless Steel	
	A	B		Part #	Price/E	Part #	Price/E
3/4"	4.000	2.000	.065	---	---	B7W-R75P	\$249.65
1"	3.750	1.875	.065	B7W-G100P	\$49.40	B7W-R100P	52.35
1 1/2"	4.500	2.250	.065	B7W-G150P	50.25	B7W-R150P	59.95
2"	6.000	3.000	.065	B7W-G200P	63.40	B7W-R200P	80.35
2 1/2"	6.000	3.000	.065	B7W-G250P	80.40	---	---
3"	6.500	3.250	.065	B7W-G300P	123.90	B7W-R300P	138.70

3 Butt Weld Reducing Tees - **B7RWWW**



Tube OD	Dimensions				Nom. Wall	polished ID/OD 304 Stainless Steel	
	A	B	C	D		Part #	Price/E
2" x 1"	2.062	1.625	2.000	1.000	.065	B7RWWW-G200100P	\$113.10
2" x 1 1/2"	2.062	1.906	2.000	1.500	.065	B7RWWW-G200150P	99.10
3" x 1 1/2"	2.594	2.406	3.000	1.500	.065	B7RWWW-G300150P	191.25
3" x 2"	2.594	2.562	3.000	2.000	.065	B7RWWW-G300200P	159.55
4" x 2 1/2"	3.438	3.094	4.000	2.500	.083	B7RWWW-G400250P	349.40
4" x 3"	3.438	3.094	4.000	3.000	.083	B7RWWW-G400300P	255.75
6" x 3"	5.625	4.875	6.000	3.000	.109	B7RWWW-G600300P	2026.20

3 Butt Weld Eccentric Reducers, #7 finish - **B32W**



Tube OD	Dimensions			Nom. Wall	polished ID/OD 304 Stainless Steel	
	A	B	C		Part #	Price/E
2" x 1"	4.000	2.000	1.000	.065	B32W-G200100P	\$158.85
2 1/2" x 1 1/2"	4.000	2.500	1.500	.065	B32W-G250150P	114.40
2 1/2" x 2"	2.000	2.500	2.000	.065	B32W-G250200P	77.15
3" x 2"	4.000	3.000	2.000	.065	B32W-G300200P	124.80
4" x 2"	8.000	4.000	2.000	.083	B32W-G400200P	290.75
4" x 3"	4.000	4.000	3.000	.083	B32W-G400300P	149.25

Sanitary Fittings **K**