



## Holedall Fittings

### Replacement Washers

Replacement washers for 520-H female internally expanded permanent couplings on pages 322 and 323 and Dubl-Grip® female reattachables on page 325.



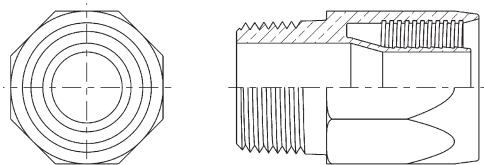
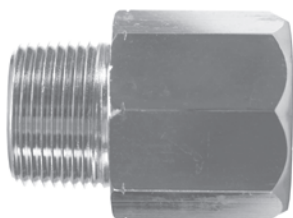
Size	Buna	
	Part #	Price/E
¾"	<b>H5071-BU</b>	<b>\$1.15</b>
1"	<b>H5072-BU</b>	<b>1.15</b>
1¼"	<b>H5073-BU</b>	<b>1.15</b>
1½"	<b>H5074-BU</b>	<b>1.15</b>
2"	<b>H5075-BU</b>	<b>1.30</b>
2½"	<b>H5076-BU</b>	<b>1.30</b>
3"	<b>H5077-BU</b>	<b>1.30</b>
4"	<b>H5078-BU</b>	<b>1.75</b>

### Permanent Couplings for Pump Hose

The most economical and trouble-free couplings for gas pump hose. Serrations on the stem become imbedded in the hose eliminating wicking and leakage. The shell extends beyond the stem to prevent cutting of interior walls. Tapered ends of stem and shell protect hose when flexed.

- Couplings provide tamper-proof static connection which cannot be broken without completely damaging coupling and hose.
- Internal expansion of stem to nominal I.D. of hose provides full flow
- Broad, firm grip of coupling extends hose life by making it possible for hose to withstand more flexings.
- Hand and electrically operated installation equipment is available. Consult factory for pricing and availability.
- **Caution:** Reattach static wire if required.

**SAFETY**  
**ALERT**



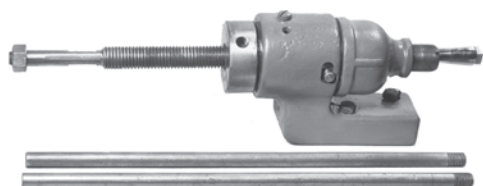
Hose I.D.	x	NPT Male	x	Hose O.D.	Chrome Plated Brass	
					Part #	Price/E
5/8"	x	3/4"	x	1"	<b>H5741</b>	<b>\$16.40</b>
5/8"	x	3/4"	x	1-1/32"	<b>H5742</b>	<b>16.40</b>
3/4"	x	3/4"	x	1-9/64"	<b>H5751</b>	<b>14.60</b>
3/4"	x	3/4"	x	1-11/64"	<b>H5752</b>	<b>14.60</b>
3/4"	x	3/4"	x	1-13/64"	<b>H5753</b>	<b>23.90</b>
3/4"	x	3/4"	x	1-7/32"	<b>H5754</b>	<b>23.90</b>
3/4"	x	3/4"	x	1-17/64"	<b>H5755 **</b>	<b>23.90</b>
1"	x	1"	x	1-25/64"	<b>H5771</b>	<b>26.45</b>
1"	x	1"	x	1-29/64"	<b>H5772</b>	<b>26.45</b>
1"	x	1"	x	1-1/2"	<b>H5773</b>	<b>26.45</b>
1"	x	1"	x	1-9/16"	<b>H5774</b>	<b>26.45</b>

\*\* Thrust plate (part # 2500HTL15) required

### HB Coupling Expander Machine

- Hand operated, pull through type expander
- For use in a fixed location for small production runs or as a portable repair type expander.
- Attaches sizes ¾" through 2" of the 520-H Series couplings, and all sizes of 570-H and 580-H Series couplings

**Note:** Expander tooling sold separately.



Part #	Price / Each
<b>2500HB0000</b>	<b>\$2780.00</b>