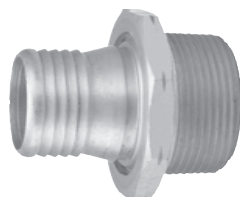




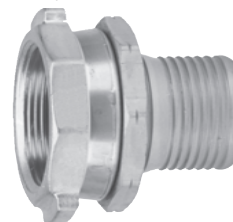
## Holedall Fittings

### API Certified Permanently Attached Petroleum Couplings

The following fittings have been tested and are compliant with API 1529 6th edition. Coupling procedures, ferrule recommendations and API test data are available upon request, please contact the factory.



**520-H Series Male**



**520-H Series Female**

Hose Size	Thread	Brass		Aluminum	
		Part #	Price/E	Part #	Price/E
1"	NPT	H5212-A	\$24.20	---	--
1¼"	NPT	H5222-A	31.85	---	--
1½"	NPT	H5232-A	39.65	---	--
2"	NPT	H5242L-A	76.00	A5242L-A <sup>1</sup>	\$66.00
2½"	NPT	H5252L-A	138.00	A5252L-A <sup>1</sup>	112.00
3"	NPT	H5262L-A	181.65	A5262L-A <sup>1</sup>	143.00
4"	NPT	H5282L-A	320.00	---	--

Hose Size	Thread	Brass Part # with Buna washer	Price / Each
1¼"	NPSH	H5221-A-BU	46.05
1½"	NPSH	H5231-A-BU	70.55
2"	NPSH	H5241L-A-BU	128.15
2½"	NPSM	H5251L-A-BU	205.30
3"	NPSM	H5261L-A-BU	268.80
4"	NPSM	H5281L-A-BU	390.00

<sup>1</sup> Requires a special thrust plate

2" **25000HTL24**

2½" **25000HTL25**

3" **25000HTL26**

### 520-H Series Ferrules



Hose I.D.	Hose O.D. Range		Brass	
	From	To	Part #	Price/E
1"	1-24/64"	1-26/64"	R1AAAS-A	\$9.00
	1-27/64"	1-29/64"	R1AAS-A	9.00
	1-30/64"	1-32/64"	R1AS-A	9.00
	1-33/64"	1-35/64"	R1BS-A	9.00
	1-36/64"	1-38/64"	R1CS-A	9.00
	1-39/64"	1-41/64"	R1DS-A	9.00
	1-42/64"	1-44/64"	R1ES-A	9.00
1¼"	1-39/64"	1-42/64"	R125AAS-A	12.50
	1-43/64"	1-46/64"	R125AS-A	12.50
	1-47/64"	1-50/64"	R125BS-A	12.50
	1-51/64"	1-54/64"	R125CS-A	12.50
	1-55/64"	1-58/64"	R125DS-A	12.50
	1-59/64"	1-62/64"	R125ES-A	12.50
1½"	1-54/64"	1-57/64"	R15AAAS-A	15.90
	1-58/64"	1-62/64"	R15AAS-A	15.90
	1-63/64"	2-2/64"	R15AS-A	15.90
	2-3/64"	2-6/64"	R15BS-A	15.90
	2-7/64"	2-11/64"	R15CS-A	15.90
	2-12/64"	2-14/64"	R15DS-A	15.90
	2-15/64"	2-19/64"	R15ES-A	15.90

Hose I.D.	Hose O.D. Range		304 Stainless Steel		Aluminum	
	From	To	Part #	Price/E	Part #	Price/E
2"	2-31/64"	2-34/64"	R2ASS-A	\$26.00	R2AAL-A	\$22.00
	2-35/64"	2-38/64"	R2BSS-A	26.00	R2BAL-A	22.00
	2-39/64"	2-42/64"	R2CSS-A	26.00	R2CAL-A	22.00
	2-43/64"	2-46/64"	R2DSS-A	26.00	R2DAL-A	22.00
	2-47/64"	2-50/64"	R2ESS-A	26.00	R2EAL-A	22.00
	2½"	2-62/64"	3-1/64"	R25ASS-A	40.20	R25AAL-A
3-2/64"		3-6/64"	R25BSS-A	40.20	R25BAL-A	33.00
3-7/64"		3-11/64"	R25CSS-A	40.20	R25CAL-A	33.00
3-12/64"		3-16/64"	R25DSS-A	40.20	R25DAL-A	33.00
3-17/64"		3-21/64"	R25ESS-A	40.20	R25EAL-A	33.00
3"		3-35/64"	3-39/64"	R3AASS-A	51.25	R3AAAL-A
	3-40/64"	3-45/64"	R3ASS-A	51.25	R3AAL-A	42.40
	3-46/64"	3-50/64"	R3BSS-A	51.25	R3BAL-A	42.40
	3-51/64"	3-54/64"	R3CSS-A	51.25	R3CAL-A	42.40
	3-55/64"	3-59/64"	R3DSS-A	51.25	R3DAL-A	42.40
	4"	4-46/64"	4-48/64"	R4ESS-A	144.50	---
4-49/64"		4-51/64"	R4FSS-A	144.50	---	--
4-52/64"		4-54/64"	R4GSS-A	144.50	---	--
4-55/64"		4-57/64"	R4HSS-A	144.50	---	--
4-58/64"		4-59/64"	R4KSS-A	144.50	---	--
4-60/64"		4-62/64"	R4LSS-A	144.50	---	--
4-63/64"		5"	R4MSS-A	144.50	---	--

J  
Holedall  
Fittings