



Holedall Fittings

External Swage Flanged Assemblies

Available with carbon steel stem, ferrule and flange, or 316 stainless steel stem, flange and carbon steel ferrule. 150# ASA flange drilling. Available in other sizes. Consult the factory for pricing.

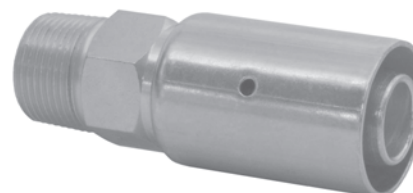


Hose I.D.	Hose O.D. Range From To		Fixed Flange				Floating Flange			
			Carbon Steel		Stainless Steel		Carbon Steel		Stainless Steel	
			Part #	Price/E	Part #	Price/E	Part #	Price/E	Part #	Price/E
2"	2-36/64"	2-40/64"	32P1SO15	\$177.00	R32P1SOR15	\$409.00	32P1LJ15	\$218.40	R32P1LJR15	\$480.40
	2-41/64"	2-48/64"	32P2SO15	177.00	R32P2SOR15	409.00	32P2LJ15	218.40	R32P2LJR15	480.40
	2-49/64"	2-56/64"	32P3SO15	177.00	R32P3SOR15	409.00	32P3LJ15	218.40	R32P3LJR15	480.40
3"	3-36/64"	3-40/64"	48P1SO15	235.00	R48P1SOR15	564.00	48P1LJ15	253.60	R48P1LJR15	647.15
	3-41/64"	3-48/64"	48P2SO15	235.00	R48P2SOR15	564.00	48P2LJ15	253.60	R48P2LJR15	647.15
	3-49/64"	3-56/64"	48P3SO15	235.00	R48P3SOR15	564.00	48P3LJ15	253.60	R48P3LJR15	647.15
4"	4-40/64"	4-44/64"	64P1SO15	307.10	R64P1SOR15	802.00	64P1LJ15	392.90	R64P1LJR15	911.65
	4-45/64"	4-52/64"	64P2SO15	307.10	R64P2SOR15	802.00	64P2LJ15	392.90	R64P2LJR15	911.65
	4-53/64"	4-60/64"	64P3SO15	307.10	R64P3SOR15	802.00	64P3LJ15	392.90	R64P3LJR15	911.65
6"	7"	7-4/64"	96P1SO15	581.00	R96P1SOR15	1498.00	96P1LJ15	731.75	R96P1LJR15	1767.80
	7-5/64"	7-12/64"	96P2SO15	581.00	R96P2SOR15	1498.00	96P2LJ15	731.75	R96P2LJR15	1767.80
	7-13/64"	7-20/64"	96P3SO15	581.00	R96P3SOR15	1498.00	96P3LJ15	731.75	R96P3LJR15	1767.80
8"	9-20/64"	9-24/64"	128P1SO15	838.35	---	---	128P1LJ15	989.50	---	---
	9-25/64"	9-32/64"	128P2SO15	838.35	---	---	128P2LJ15	989.50	---	---
	9-33/64"	9-40/64"	128P3SO15	838.35	---	---	128P3LJ15	989.50	---	---

External Swage Uni-Range Male Couplings

Designed for smaller hose systems, these couplings may be used for hose I.D.'s of 1/4" - 1" and come complete with factory assembled stem and ferrule combination.

- Can be swaged or crimped
- Other hose O.D.'s available, consult the factory.
- Stainless steel stems are investment cast



Plated carbon steel stem and ferrule

Hose I.D. and NPTF Size	Hose O.D. Range		Part #	Price/E
	From	To		
1/4"	34/64"	38/64"	4P1	\$13.60
	38/64"	42/64"	4P2	13.60
	42/64"	46/64"	4P3	13.60
3/8"	46/64"	50/64"	6P1	16.00
	50/64"	54/64"	6P2	16.00
	54/64"	58/64"	6P3	16.00
1/2"	54/64"	58/64"	8P1	16.60
	58/64"	62/64"	8P2	16.60
	62/64"	1-2/64"	8P3	16.60
3/4"	1-10/64"	1-14/64"	12P1	17.05
	1-14/64"	1-18/64"	12P2	17.05
	1-18/64"	1-22/64"	12P3	17.05
1"	1-30/64"	1-34/64"	16P1	18.85
	1-34/64"	1-38/64"	16P2	18.85
	1-38/64"	1-42/64"	16P3	18.85
	1-42/64"	1-46/64"	16P4	18.85

316 stainless steel stem, plated carbon steel ferrule

Hose I.D. and NPTF Size	Hose O.D. Range		Part #	Price/E
	From	To		
3/4"	1-10/64"	1-14/64"	R12P1	\$57.90
	1-14/64"	1-18/64"	R12P2	57.90
	1-18/64"	1-22/64"	R12P3	57.90
1"	1-30/64"	1-34/64"	R16P1	101.90
	1-34/64"	1-38/64"	R16P2	101.90
	1-38/64"	1-42/64"	R16P3	101.90
	1-42/64"	1-46/64"	R16P4	101.90

316 stainless steel stem, 304 stainless steel ferrule

Hose I.D. and NPTF Size	Hose O.D. Range		Part #	Price/E
	From	To		
1/2"	58/64"	62/64"	R8P2SS	\$110.00
3/4"	1-6/64"	1-12/64"	R12P1250	85.60
	1-13/64"	1-22/64"	R12P1370	85.60
1"	1-30/64"	1-38/64"	R16P1620	115.00
	1-38/64"	1-46/64"	R16P1770	115.00