



Plastic Fittings

Tuff-lite Agricultural Fittings

Straight



male straight thread to hose barb

Male Thread	Hose Barb	Nylon Part #	Price / E
11/16 - 16 UN	3/8"	38D	\$1.02
11/16 - 16 UN	1/2"	3812D	1.02

Elbows



male straight thread to hose barb

Male Thread	Hose Barb	Nylon Part #	Price / E
11/16 - 16 UN	3/8"	NTL38	\$1.84
11/16 - 16 UN	1/2"	NTL12	1.66

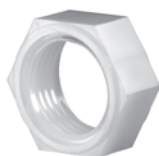
Tees



male straight thread branch - hose barb run

Male Thread	Hose Barb	Nylon Part #	Price / E
11/16 - 16 UN	3/8"	NTT38	\$1.66
11/16 - 16 UN	1/2"	NTT12	1.66

Nozzle Nut



fits all nozzle fittings with 11/16 straight thread

Thread Size	Nylon Part #	Price / E
11/16 - 16 UN	B12NOZNUT	\$.38

Knurled Cap



fits all nozzle fittings with 11/16 straight thread

Thread Size	Nylon Part #	Price / E
11/16 - 16 UN	3942	\$.48

Barbed Nozzles



use with swivel nut

Hose Barb	Nylon Part #	Price / E
3/8"	K8438	\$.54
1/2"	K8412	.81

Swivel Nut



use with barbed nozzle

Thread Size	Nylon Part #	Price / E
11/16 - 16 UN	8027	\$.36

