

## Shank Type Fittings

### Dixon Steel Hose Menders



- They are not for compressible products such as air, nitrogen or steam.
- The working pressure may vary with the construction of the hose, the type of clamping system used and the application. Consult the factory for recommendations.
- In accordance with the R.M.A. bulletin for oil suction and discharge hose, a coupled length of hose in any size, should be tested to 1½ times the working pressure and held for fifteen minutes without leaking or coupling movement. For additional information and detailed instruction on testing procedures, see the Rubber Manufacturers Association (R.M.A.) handbook.

Size	Zinc Plated Steel		Pkg Qty
	Part #	Price/E	
1/4"	<b>DMA</b>	<b>\$5.65</b>	200
3/8"	<b>DMB</b>	<b>5.70</b>	100
1/2"	<b>DM1</b>	<b>5.20</b>	50
5/8"	<b>DM5</b>	<b>5.80</b>	50
3/4"	<b>DM6</b>	<b>4.25</b>	50
1"	<b>DM11</b>	<b>4.30</b>	50
1-1/4"	<b>DM16</b>	<b>6.55</b>	50
1-3/8"	<b>DM18</b>	<b>21.55</b>	50
1-1/2"	<b>DM21</b>	<b>6.40</b>	50
1-1/2"	<b>DMXL21*</b>	<b>20.00</b>	25
2"	<b>DM26</b>	<b>8.50</b>	50
2"	<b>DMXL26*</b>	<b>23.80</b>	25
2-1/2"	<b>DM31</b>	<b>14.45</b>	25
3"	<b>DM36</b>	<b>17.10</b>	20
4"	<b>DM46</b>	<b>28.70</b>	10
5"	<b>DM51</b>	<b>99.10</b>	5
6"	<b>DM66</b>	<b>65.20</b>	4
8"	<b>DM86</b>	<b>162.70</b>	1
10"	<b>DM100</b>	<b>269.10</b>	1
12"	<b>DM120</b>	<b>426.45</b>	1

Size	Stainless Steel		Pkg Qty
	Part #	Price/E	
1/4"	<b>RDMA</b>	<b>\$23.20</b>	100
3/8"	<b>RDMB</b>	<b>25.95</b>	100
1/2"	<b>RDM1</b>	<b>23.30</b>	50
3/4"	<b>RDM6</b>	<b>47.50</b>	50
1"	<b>RDM11</b>	<b>50.40</b>	50
1-1/4"	<b>RDM16</b>	<b>53.00</b>	5
1-1/2"	<b>RDM21</b>	<b>61.10</b>	50
2"	<b>RDM26</b>	<b>67.80</b>	10
3"	<b>RDM36</b>	<b>152.35</b>	5
4"	<b>RDM46</b>	<b>180.75</b>	5

\* XL series is extra long

### King Steel Hose Menders



**For 1 Clamp Each End**

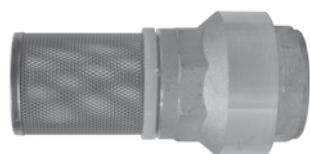
Size	Steel	
	Part #	Price/E
1/4"	<b>KM21</b>	<b>\$7.95</b>
5/16"	<b>KM251</b>	<b>5.85</b>
1/2"	<b>KM41</b>	<b>7.25</b>
5/8"	<b>KM51</b>	<b>10.55</b>
3/4"	<b>KM61</b>	<b>5.70</b>
1"	<b>KM81</b>	<b>6.45</b>
1-1/4"	<b>KM101</b>	<b>6.45</b>
1-1/2"	<b>KM121</b>	<b>9.35</b>
2"	---	---

**For 2 Clamps Each End**

Size	Steel	
	Part #	Price/E
1/4"	---	---
5/16"	---	---
1/2"	<b>KM42</b>	<b>\$9.10</b>
5/8"	<b>KM52</b>	<b>9.95</b>
3/4"	<b>KM62</b>	<b>8.75</b>
1"	<b>KM82</b>	<b>9.80</b>
1-1/4"	<b>KM102</b>	<b>10.80</b>
1-1/2"	<b>KM122</b>	<b>15.80</b>
2"	<b>KM162</b>	<b>22.05</b>

- They are not for compressible products such as air, nitrogen or steam.
- The working pressure may vary with the construction of the hose, the type of clamping system used and the application. Consult the factory for recommendations.
- In accordance with the R.M.A. bulletin for oil suction and discharge hose, a coupled length of hose in any size, should be tested to 1½ times the working pressure and held for fifteen minutes without leaking or coupling movement. For additional information and detailed instruction on testing procedures, see the Rubber Manufacturers Association (R.M.A.) handbook.

### Strainer with Spring Loaded Check Valves



Size	Part #	Price/E
1½"	<b>BVFS20*</b>	<b>\$78.65</b>
2"	<b>BVFS25*</b>	<b>123.75</b>
3"	<b>BVFS35</b>	<b>333.05</b>
4"	<b>BVFS40</b>	<b>502.30</b>

\* NSF61 approved

- Brass with NBR seat, stainless steel strainer
- Soft seat for bubble tight shutoff, spring loaded for fast seating action.
- Flow profile designed to minimize head loss.
- Temperature range: **10°F to 210°F** (-10°C to 100°C)
- Cracking pressure: **0.50 PSI**
- Pressure rating:  
1½" - 2" **400 PSI** WOG  
3" - 4" **175 PSI** WOG