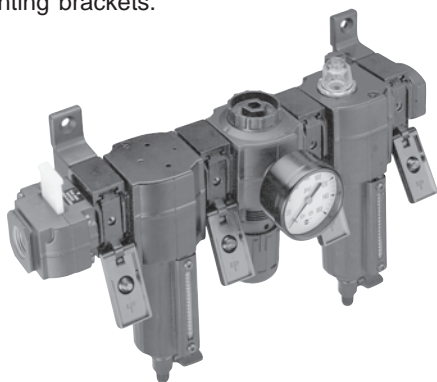


## Series 1 Accessories

### Typical Setup

Combination unit shown with clamps, end pipe adapters and wall mounting brackets.



### Clamp Wall Mounting Brackets

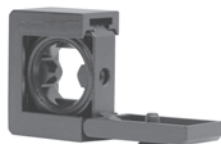
Use with the clamp to provide secure mounting to a wall, machine panel or other flat surface. 72 Series mounts with 3/16" screws; 74 Series mounts with 7/32" screws.



Series	Part #	Price/E
72	4213-89	\$4.90
73, 74	4313-50	9.40

### Clamps

For use with all 72, 73 and 74 Series products to provide modular installation capability. Flanges on the products slide into V grooves in the clamp. Two face-sealing O-rings in the clamp provide a positive seal when the clamp is closed and the captive screw is tightened.



Series	Part #	Price/E
72 quickclamp	4214-51	\$14.15
73, 74 quickclamp	4314-51	17.50
72 service kit (2 O-rings)	4384-570	1.40
73, 74 service kit (2 O-rings)	4384-770	6.65

### Clamp and Wall Mounting Brackets



Series	Part #	Price/E
72	4214-52	\$18.80
73, 74	4314-52	26.75

### Wall Mounting Brackets

For use with 72, 73 and 74 Series products to secure to a wall, machine panel or other flat surface. For use instead of quickclamps and pipe adapters for wall attachment of combination unit or individual filter, regulator or lubricator. Use close nipples to connect combination unit and then place in bracket.

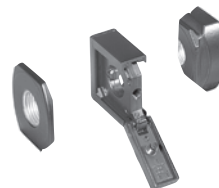


Series	Part #	Price/E
72	4224-50	\$15.75
73	4424-50	17.25
74	4324-50	21.10
74	4324-51*	37.70

\* For L74 with 1 quart reservoir

### Pipe Adapters

For use with clamps to provide PTF threaded connections to the system piping. Sold individually.



Series	Size	Part #	Price/E
72	1/4"	4215-02	\$17.00
72	3/8"	4215-03	17.00
73, 74	1/4"	4315-01	23.35
73, 74	3/8"	4315-02	23.35
73, 74	1/2"	4315-03	23.35
73, 74	3/4"	4315-04	23.35

### Porting Blocks

Installs between two clamps to provide three additional 1/4" PTF outlets for auxiliary air.



Series	Part #	Price/E
72	4216-50	\$33.10
73, 74	4316-50	34.85

### Manifold Blocks

Installs with clamps. 72 Series ports are threaded 3/8" PTF; 73 and 74 Series ports are threaded 3/4" PTF to provide manifolding capability for up to three components.



Series	Part #	Price/E
72	4228-01	\$74.80
73, 74	4328-50	68.30

D  
Air  
Fittings