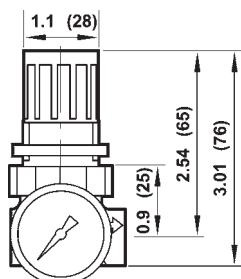


Series 1 Miniature Water Regulator

Designed for use with deionized water and potable water systems. Plastic and metals in contact with fluid are approved by the National Sanitation Foundation (NSF) or the Food and Drug Administration (FDA) for use in potable water systems. Elastomers are food grade.



With Gauge

Size	Part #	GPM	Price/E
1/4"	R91-221RG	1.75	\$73.60

- Non-relieving type

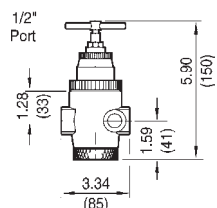
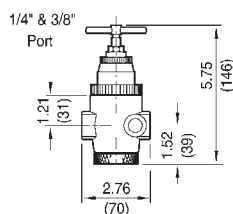


D
Air
Fittings

Models supplied with a GC620 gauge.

Series 1 Water Regulators

Used in water systems to reduce and maintain pressure at a nearly constant level despite changes in the inlet pressure and changes in downstream flow requirements. Brass body and aluminum bonnet.



With Gauge

Size	Part #	GPM	Price/E
1/4"	R43-201RG	5	\$240.70
3/8"	R43-301RG	5	240.70
1/2"	R43-406RG	10	278.40

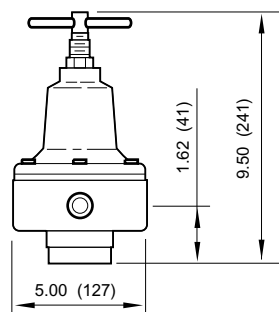
- T-handle adjustment standard
- Non-relieving type
- Gauge port is full-flow and can be used as an outlet port
- Adjustable **5-125 PSI**
- Inlet pressure **400 PSI** maximum



Models supplied with a GC230 gauge.

Series 1 Water Pressure Regulators

Balanced valve minimizes effects of the inlet pressure variations on outlet pressure. Body, valve and bottom plug are brass. Bonnet is aluminum and steel. Elastomers are nitrile.



Size	Part #	GPM	Price/E
3/4"	11-009-065	27.5	\$892.15
1"	11-009-081	27.5	892.15

- T-handle adjustment standard
- Non-relieving type
- Maximum pressure: **400 PSI**
- Operating temperature:
water service: **35° to 200°F** (2° to 93°C)
air service: **-30° to 200°F** (-34° to 93°C)



SCFM ratings at 100 PSI inlet pressure