

## Wilkerson Accessories

### Modular Sleeve

Our unique modular sleeve design easily and quickly connects one or more units and accessories together without pipe nipples. Hand tightening the threaded pin provides a tight seal between the units.



Part #	Price/E
<b>GPA-95-292</b>	<b>\$16.60</b>

### Modular Connection End Blocks

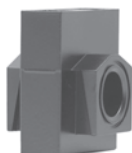
The threaded end blocks, available in five pipe sizes together with the modular sleeve, allow a single unit or a combination of units to be piped into the air system in the modular mode. This feature allows ease of unit servicing or replacement without disturbing the air line connections. Set of 2 blocks (inlet and outlet).



Size	Part #	Price/E
1/4" NPT	<b>GPA-95-223</b>	<b>\$29.90</b>
3/8" NPT	<b>GPA-95-224</b>	<b>29.90</b>
1/2" NPT	<b>GPA-95-225</b>	<b>29.90</b>
3/4" NPT	<b>GPA-95-320</b>	<b>61.10</b>
1" NPT	<b>GPA-95-321</b>	<b>61.10</b>

### Modular Manifold Block

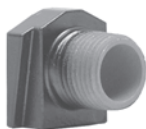
Manifold block allows easy design flexibility. Manifold block can be installed after the filter, or regulator, providing three additional 1/4" NPT tapped auxiliary ports. Inlet/outlet ports are 1/2" nontapped. 1-17/32" wide.



Part #	Price/E
<b>GPA-95-919</b>	<b>\$49.85</b>

### Modular Pipe Adapter Inserts

The threaded male pipe adaptor insert, together with the modular sleeve, allow a single conventional unit or a combination of conventional units to be piped into the air system in the modular mode. This feature allows general design flexibility in that other Wilkerson products, together with the modular products can now be installed into the same air system. Set of 2 blocks.



Size	Part #	Price/E
1/4" NPT	<b>GPA-95-035</b>	<b>\$42.45</b>
3/8" NPT	<b>GPA-95-036</b>	<b>42.45</b>
1/2" NPT	<b>GPA-95-037</b>	<b>42.45</b>

### Modular Sleeve Wall Mounting Brackets

Designed for mounting a single unit or combination of units directly to the wall. The sleeve and mounting bracket can be ordered assembled from the factory, or just the mounting bracket alone to be used on existing modular sleeves.



Part #	Description	Price/E
<b>GPA-95-968</b>	bracket	<b>\$14.05</b>
<b>GPA-95-969</b>	sleeve and bracket	<b>31.60</b>

### Modular Shut-Off Valves

Valve can be installed immediately upstream of a single unit or combination of units. The valve is secured to the unit with a modular sleeve or modular sleeve wall mounting bracket. Ball-type valve operates with a 1/4 turn from open to shut position. Particularly useful for isolating and depressurizing a downstream unit requiring maintenance or replacement. Valve can be locked in the open position.



Size	Part #	Price/E
1/4" NPT	<b>GPA-95-096</b>	<b>\$133.85</b>
3/8" NPT	<b>GPA-95-097</b>	<b>133.85</b>
1/2" NPT	<b>GPA-95-098</b>	<b>133.85</b>

### Flush Mount Gauge for 08 Series

For units originally purchased with Flush Mounted Gauge



Part #	Description	Price/E
<b>GRP-96-719</b>	0-160 PSI flush mount gauge for R08 and B08	<b>\$27.05</b>

### Differential Pressure Indicators

Used to replace damaged indicators on Filters and Modular Coalescing Filters. Pressure loss changes color of indicator window from green to red.



Part #	Description	Price/E
<b>DP2-01-000</b>	for M16, M26, M30 and M32	<b>\$28.25</b>
<b>DP2-01-001</b>	for F35 and M35	<b>33.95</b>