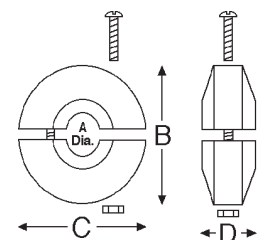
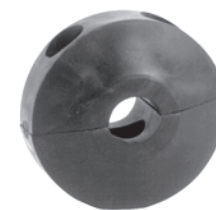


Hose Reels and Racks

Adjustable Hose Bumper Stops

Hose I.D.	Hose O.D.		Dimensions		Reel Series	Part #	Price/E
	From:	To:	B,C,E	D			
1/4"	.438"	.625"	2-1/2"	1-1/4"	5000	1-HR1004A	\$23.00
3/8"	.625"	.749"	2-1/2"	1-1/4"	5000	1-HR1004	23.00
3/8"	.625"	.749"	3"	1-1/4"	7000	1-HR1004-3	23.00
1/2" or 3/8" 2-wire	.750"	1.050"	3"	1-1/4"	7000	2-HR1004-3	23.00
3/4"	1.060"	1.300"	3"	1-1/4"	7000	3-HR1004-3	23.00
1/2"	.750"	1.050"	3-1/2"	2-7/8"	9000	2-HR1005	53.85
3/4"	1.060"	1.380"	3-1/2"	2-7/8"	9000	3-HR1005	53.85
1"	1.390"	1.550"	3-1/2"	2-7/8"	9000	4-HR1005	53.85



D
Air
Fittings

Adjustable Hose Bumper Stops are not included on hose reels ordered without hose. Order separately.

Reelcraft® 30,000 Manual Driven Hose Reels

Without Hose

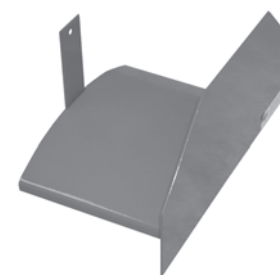
Hose I.D.	Hose Capacity	Spool Width	PSI	Weight lbs.	Part #	Price/E
3/4"	100'	12"	1000	46	C33112L	\$645.00
1/2"	200'	12"	3000	46	C32112M	554.00



- Unitized construction: Reel frame, spool and drum are fabricated from heavy gauge steel.
- All bolted construction - no welds
- Manual driven standard
- Motor drive available

Hose Rack

Hose Size	Hose Capacity	Weight lbs.	Part #	Price/E
2" to 2 1/2"	9" Depth, 100' of 2 1/2"	8	HR1610	\$162.80



- Can be used for fire or water hose
- Overall width 16", height 10"
- Fabricated of heavy-gauge sheet steel for rugged industrial and shipboard use
- Saddle racks provide compact and economical hose storage for all types of hose
- Rugged 12 gauge steel construction provides long dependable service
- Curved saddle design avoids sharp bends in hose to prolong hose life
- Red painted finish for protection and appearance

Hung Up On Dixon Hose Racks



DHR1
Single Hose Rack

Description	Weight lbs.	Part #	Price/E
Single hose rack	3.5	DHR1	\$195.60
Double hose rack	9.5	DHR2	400.00

- Aluminum rack mounts easily on walls or poles
- Can be used for fire or water hose
- Single rack overall dimensions 19-1/2" x 6" x 9-3/16"
- Double rack overall dimensions 19-1/2" x 12" x 9-3/16"
- Two racks can be bolted face to face to create extra hose capacity
- Single and double racks have 5 pre-drilled 5/16" mounting holes



DHR2
Double Hose Rack