

## In-Line Lubricators

Designed to protect portable or stationary air tools by efficiently oiling the tool mechanisms. Each time an air tool is operated, a fine mist of oil is injected into it along with the air from the compressor. Installation is recommended within 25 feet of the tool to be lubricated. Refer to the arrow for proper air flow direction. Transparent sight disc allows visual inspection of oil level. Oil flow regulated by screwdriver screw adjustment. Not recommended for constant flow applications. For reciprocating tools only. Minimum flow rate is 30 SCFM.

### Type of Oil to use:

Use any petroleum-base, non-detergent light weight oil (SAE 10/150SSU) which will readily break up into a mist, i.e., Mobil DTE light or comparable oil. **Do not use any synthetic oil or oils containing additives** or solvents.

**SAFETY  
ALERT**

See page 119 for air tool lubricant.

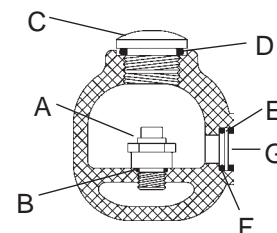
NPT Sizes	Oil Capacity	Maximum Working Pressure	Air Flow at 70 PSI	Part #	Price/E
1/2"	1.4 fluid ozs.	<b>500 PSI</b>	30 SCFM	<b>PL300</b>	<b>\$100.50</b>
3/4"	3.7 fluid ozs.	<b>200 PSI</b>	70 SCFM	<b>PL400</b>	<b>105.50</b>
3/4"	11.0 fluid ozs.	<b>300 PSI</b>	70 SCFM	<b>PL400L</b>	<b>130.90</b>
1"	16.0 fluid ozs.	<b>250 PSI</b>	100 SCFM	<b>PL500</b>	<b>174.50</b>



**D**  
Air Fittings

### Replacement Parts

Description	Part #	Price/E	Description	Part #	Price/E
(A) oil adjustment valve assembly	<b>851661</b>	<b>\$42.80</b>	(D) fill plug O-ring	<b>700013-214</b>	<b>\$1.40</b>
(B) valve gasket	<b>452531</b>	<b>2.20</b>	(E) sight disk	<b>452532</b>	<b>2.30</b>
(C) fill plug	<b>452525</b>	<b>12.40</b>	(F) sight disk seal	<b>700013-016</b>	<b>1.50</b>
			(G) sight disk lock nut	<b>452533</b>	<b>6.25</b>



## In-Line Air Filters

Designed specifically for the protection of small air tools, such as impact wrenches, nut runners, grinders and screwdrivers. The all-anodized, lightweight aluminum housing is compact can be used directly before the air tool.

- Maximum operating pressure: **500 PSI**
- Operating temperatures: **35°F to 200°F**
- Air flow is 140 SCFM
- Standard element is 40 micron, which ensures minimum pressure drop.
- Elements can be replaced quickly.



Male NPT	Overall Length	Diameter	Weight Lbs.	Aluminum Part #	Price/E
3/4"	3-13/16"	1-1/2"	.46	<b>9076M</b>	<b>\$63.00</b>

## In-Line Lubricator with Filter

Combination unit consists of **9076M** particle filter with 40 micron sintered bronze element and **PL400** (3.7 ounce) or **PL400L** (11.0 ounce) lubricator.

NPT Sizes	Oil Capacity	Maximum Work. Press.	Part #	Price/E
3/4"	3.7 fluid ozs.	<b>200 PSI</b>	<b>PL400WF</b>	<b>\$191.40</b>
3/4"	11.0 fluid ozs.	<b>300 PSI</b>	<b>PL400LWF</b>	<b>216.75</b>



## Compressor Y

- Converts a single supply source to a dual outlet

Female NPT Inlet (1)	Male NPT Outlet (2)	Iron Part #	Price/E
1"	3/4"	<b>Y10075</b>	<b>\$53.55</b>

