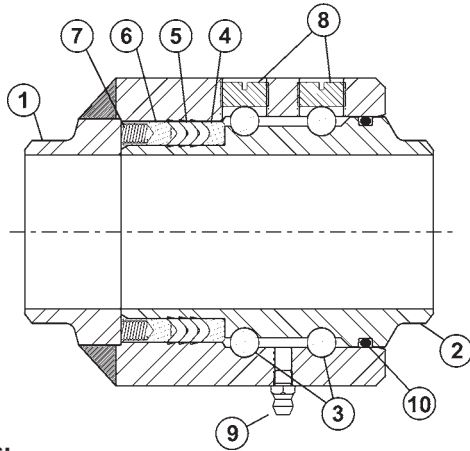


B
Swivel
Joints

V-Ring Swivel Joints

V-Ring Parts Identification List

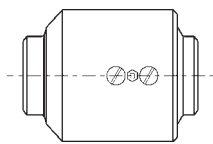


1. body
2. sleeve
3. ball bearings
4. seal retainer
5. V-Ring (pressure) seal
6. spring retainer
7. spring
8. ball retainer screw
9. grease fitting
10. O-Ring (dust) seal

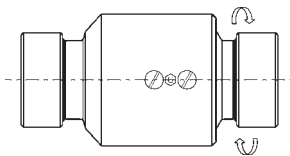
V-Ring Features:

- The spring-loaded triple V-ring sealing system ensures a leak proof seal at either high or low pressure and an extended seal life compared to the conventional single O-ring design.
- The 3" - 8" carbon steel swivels are manufactured from carbon steel with flame hardened dual raceways for greater load bearing capacity and longer life.
- The stainless steel swivels are manufactured in 316 grade stainless steel for superior corrosion resistance.
- Available with pressure ratings to 1,000 PSI
- Available in carbon steel, stainless steel and aluminum
- **Optional 100% full penetration welding available**

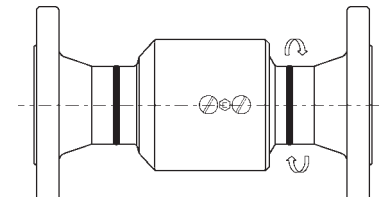
Single Plane V-Ring Style 20



weld end x weld end
sizes 2" - 8"

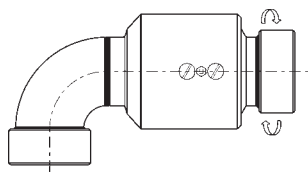


female NPT x female NPT
sizes 2" - 8"

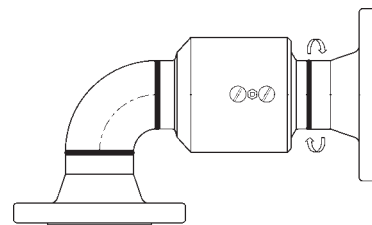


150# ASA flange x 150# ASA flange
sizes 2" - 8"

Single Plane V-Ring Style 30

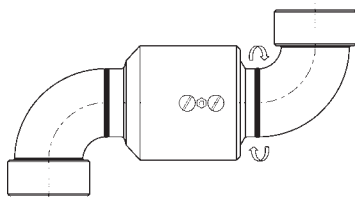


female NPT x female NPT
sizes 2" - 8"

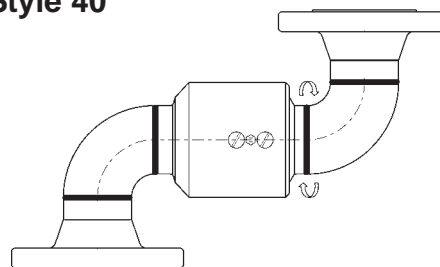


150# ASA flange x 150# ASA flange
sizes 2" - 8"

Single Plane V-Ring Style 40



female NPT x female NPT
sizes 2" - 8"



150# ASA flange x 150# ASA flange
sizes 2" - 8"