



Cam and Groove

## Polypropylene Cam and Groove Couplers

Polypropylene not recommended for use with Teflon® gaskets.

**SAFETY**  
**ALERT**

### Type D Couplers

Size	Polypropylene Part #	Price/E	Pkg Qty
3/4" x 1/2"	<b>PPD50</b>	\$12.25	24
3/4"	<b>PPD75</b>	12.25	24
1"	<b>PPD100</b>	14.00	24
1 1/2" x 1 1/4"	<b>PPD125</b>	16.75	24
1 1/2"	<b>PPD150</b>	16.60	24
2"	<b>PPD200</b>	19.60	24
3"	<b>PPD300</b>	32.25	24
4"	<b>PPD400</b> <sup>2</sup>	64.75	8



Female Coupler x  
Female NPT

### Type B Couplers

Size	Polypropylene Part #	Price/E	Pkg Qty
3/4" x 1/2"	<b>PPB50</b>	\$12.25	24
3/4"	<b>PPB75</b>	12.25	24
1"	<b>PPB100</b>	14.00	24
1 1/2" x 1 1/4"	<b>PPB125</b>	16.75	24
1 1/2"	<b>PPB150</b>	16.55	24
2"	<b>PPB200</b>	19.60	24
3"	<b>PPB300</b>	32.25	24
4"	<b>PPB400</b> <sup>2</sup>	64.75	8



Female Coupler x  
Male NPT

### Type C Couplers

Size	Polypropylene Part #	Price/E	Pkg Qty
3/4" x 1/2"	<b>PPC50</b>	\$12.25	24
3/4"	<b>PPC75</b>	12.25	24
1"	<b>PPC100</b>	14.00	24
1 1/2" x 1 1/4"	<b>PPC125</b>	16.75	24
1 1/2"	<b>PPC150</b>	16.60	24
2"	<b>PPC200</b>	19.60	24
3"	<b>PPC300</b>	32.25	24
4"	<b>PPC400</b> <sup>2</sup>	64.75	8



Female Coupler x  
Hose Shank

### Type H Dust Caps<sup>1</sup>

Size	Polypropylene Part #	Price/E	Pkg Qty
3/4"	<b>PPH75</b>	\$11.85	24
1"	<b>PPH100</b>	13.55	24
1 1/2"	<b>PPH150</b>	16.60	24
2"	<b>PPH200</b>	19.60	24
3"	<b>PPH300</b>	32.25	24
4"	<b>PPH400</b> <sup>2</sup>	47.10	8



Dust Cap<sup>1</sup>

- Recommended for a maximum working pressure of **125 PSI** (1/2" - 1"), **100 PSI** (1 1/4" - 2") and **75 PSI** (3" - 4"). Recommendations based on the use of mating Dixon fittings at an ambient temperature of **70°F** with standard seal installed.
- 1/2" couplers and adapters will interchange with 3/4" couplers and adapters. Only the threads and barbs are 1/2".  
1 1/4" couplers and adapters will interchange with 1 1/2" couplers and adapters. Only the threads and barbs are 1 1/4".
- Polypropylene cam and groove should not be mixed with aluminum fittings. **SAFETY ALERT**
- Supplied with EPDM gaskets, 304 stainless steel handles and pins.
- Couplers are manufactured from a glass-filled polypropylene.

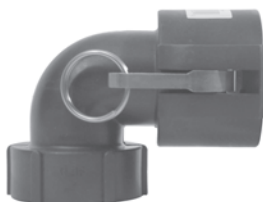
<sup>1</sup> Dust caps and dust plugs are not to be used in pressure applications for safety and environmental reasons. **SAFETY ALERT**

<sup>2</sup> 4" coupler has 3 handles

## Polypropylene Coupler Elbows

### 90° Coupler x Female NPT

Size	Polypropylene Part #	Price/E	Pkg Qty
1 1/2"	<b>90PPD150</b>	\$19.35	24
2"	<b>90PPD200</b>	23.45	24



### 90° Coupler x Hose Shank

Size	Polypropylene Part #	Price/E	Pkg Qty
1 1/2"	<b>90PPC150</b>	\$19.35	24
2"	<b>90PPC200</b>	23.45	24



- Recommended for a maximum working pressure of **100 PSI** (1 1/2" - 2"). Recommendations based on the use of mating Dixon fittings at an ambient temperature of **70°F** with standard seal installed.
- Coupler elbows are manufactured from a glass-filled polypropylene.
- Supplied with EPDM gaskets, 304 stainless steel handles and pins.
- For use at elevated temperatures or other unusual operating conditions, consult factory. **SAFETY ALERT**

Optional Pkg./Box Quantity Shown