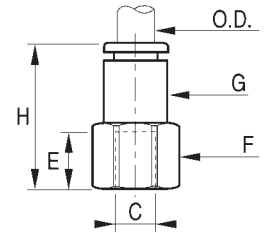


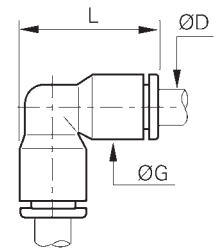
Push-To-Connect

Straight Female Connector – Fractional Inch Tube To NPT



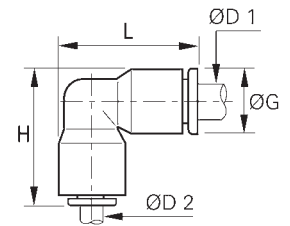
| ØD in | C NPT | Cat. No. | F mm | G in | H in | E in | Scale oz |
|----------|----------|------------------|---------|---------|---------|---------|-------------|
| 1/8 | 1/8 | PCNY2405-02-02 | 13 | .43 | .87 | .37 | .48 |
| 1/8 | 1/4 | PCNY2405-02-04 | 16 | .43 | 1.05 | .55 | .74 |
| 5/32 | 1/8 | PCNY2405-02.5-02 | 13 | .33 | .89 | .37 | .37 |
| 5/32 | 1/4 | PCNY2405-02.5-04 | 16 | .33 | 1.06 | .55 | .65 |
| 3/16 | 1/8 | PCNY2405-03-02 | 9/16 | | 1.06 | | .76 |
| 3/16 | 1/4 | PCNY2405-03-04 | 11/16 | | 1.26 | | 1.01 |
| 1/4 | 1/8 | PCNY2405-04-02 | 13 | .42 | .98 | .37 | .44 |
| 1/4 | 1/4 | PCNY2405-04-04 | 16 | .42 | 1.16 | .55 | .66 |
| 5/16 | 1/8 | PCNY2405-05-02 | 13 | .53 | 1.14 | .37 | .55 |
| 5/16 | 1/4 | PCNY2405-05-04 | 16 | .53 | 1.32 | .55 | .85 |
| 3/8 | 1/8 | PCNY2405-06-02 | 16 | .61 | 1.22 | .37 | .94 |
| 3/8 | 1/4 | PCNY2405-06-04 | 16 | .61 | 1.40 | .55 | .94 |
| 3/8 | 3/8 | PCNY2405-06-06 | 22 | .61 | 1.52 | .65 | 1.85 |
| 1/2 | 3/8 | PCNY2405-08-06 | 22 | .85 | 1.81 | .65 | 3.25 |
| 1/2 | 1/2 | PCNY2405-08-08 | 24 | .85 | 1.93 | .77 | 4.02 |

Union Elbow – Fractional Inch To Tube



| ØD in | Cat. No. | G in | L in | Scale oz |
|----------|--------------------|---------|---------|-------------|
| 1/8 | PCNY2500-02-02 | .33 | .71 | .11 |
| 5/32 | PCNY2500-02.5-02.5 | .33 | .75 | .07 |
| 3/16 | PCNY2500-03-03 | .43 | 1.07 | .55 |
| 1/4 | PCNY2500-04-04 | .43 | .93 | .15 |
| 5/16 | PCNY2500-05-05 | .53 | 1.16 | .25 |
| 3/8 | PCNY2500-06-06 | .63 | 1.33 | .41 |
| 1/2 | PCNY2500-08-08 | .87 | 1.38 | .65 |

Unequal Union Elbow – Fractional Inch Tube To Tube



| ØD1 in | ØD2 in | Cat. No. | G in | H in | L in | Scale oz |
|-----------|-----------|------------------|---------|---------|---------|-------------|
| 1/8 | 1/4 | PCNY2500-02-04 | .43 | .93 | .93 | .20 |
| 5/32 | 1/4 | PCNY2500-02.5-04 | .43 | .93 | .93 | .25 |
| 3/8 | 1/4 | PCNY2500-06-04 | .63 | 1.30 | 1.33 | .50 |
| 3/8 | 1/2 | PCNY2500-06-08 | .87 | 1.81 | 1.81 | .65 |