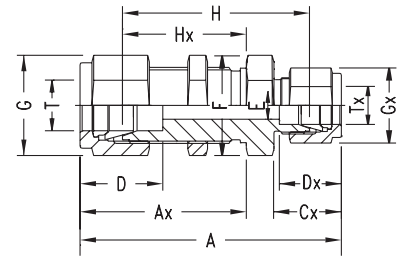


# Double-Ferrule Tube Fittings

## Bulkhead Reducing Union N2700-LN

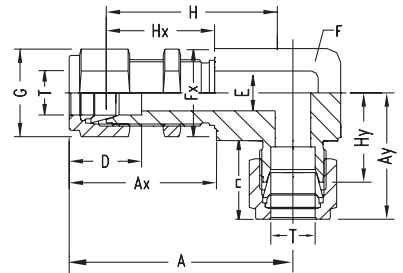
INCH OD Tubes



Part No.	T Tube OD	Tx Tube OD	A	Ax	Cx	D	Dx	E min.	F A/F	G A/F	Gx A/F	H	Hx	Panel Hole Drill Size	Max. Panel Thickness
N2700-LN-04-02	1/4	1/8	55.2	33.5	15.3	15.3	12.7	2.4	16	14	11	41.2	26.2	11.5	10.2
N2700-LN-06-04	3/8	1/4	60.7	36.6	17.8	16.8	15.3	4.8	22	17	14	46.0	29.5	14.6	11.2
N2700-LN-08-04	1/2	1/4	66.8	41.9	17.8	22.4	15.3	4.8	24	22	14	49.2	31.8	19.5	12.7
N2700-LN-08-06	1/2	3/8	66.8	41.9	17.8	22.4	16.8	7.1	24	22	17	49.2	31.8	19.5	12.7

## Bulkhead Union Elbow N2701-LN

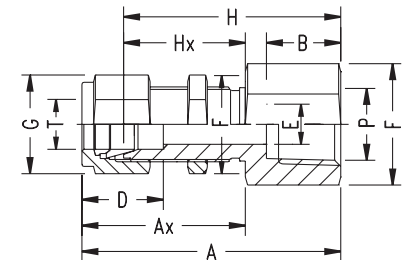
INCH OD Tubes



Part No.	T Tube OD	A	Ax	Ay	C	D	E min.	F A/F	G A/F	H	Hx	Hy	Panel Hole Drill Size	Max. Panel Thickness
N2701-LN-02-02	1/8	43.1	31.2	22.4	15.3	12.7	2.4	11	11	36.5	24.6	15.8	8.3	12.7
N2701-LN-04-04	1/4	48.9	33.6	26.9	17.8	15.3	4.8	16	14	41.5	26.2	19.6	11.5	10.1
N2701-LN-06-06	3/8	54.1	36.8	30.5	19.3	16.8	7.1	22	17	46.8	29.5	23.2	14.6	11.1
N2701-LN-08-08	1/2	63.5	41.9	36.0	21.8	22.9	10.4	24	22	53.4	31.8	25.9	19.5	12.7
N2701-LN-12-12	3/4	75.3	47.5	39.9	21.8	24.4	16.0	30	29	65.2	37.4	29.7	25.8	16.8
N2701-LN-16-16	1	91.8	57.4	49.0	26.4	31.2	22.3	35	38	79.6	45.2	36.8	33.7	19.0

## Bulkhead Female Connector N2705

INCH OD Tubes x Female NPT Threads



Part No.	T Tube OD	P NPT Female	A	Ax	B	D	E min.	F A/F	G A/F	H	Hx	Panel Hole Drill Size	Max. Panel Thickness
N2705-02-02	1/8	1/8	44.7	31.2	10.4	12.7	2.4	14	11	38.1	24.6	8.3	12.7
N2705-04-02	1/4	1/8	47.0	33.5	10.4	15.3	4.8	16	14	39.7	26.2	11.5	10.2
N2705-04-04	1/4	1/4	51.5	33.5	15.0	15.3	4.8	19	14	44.2	26.2	11.5	10.2
N2705-06-04	3/8	1/4	54.8	36.8	15.0	16.8	7.1	19	17	47.5	29.5	14.7	11.2
N2705-08-06	1/2	3/8	61.7	41.9	15.0	22.9	10.4	22	22	51.6	31.0	19.5	12.7
N2705-08-08	1/2	1/2	66.7	41.9	19.8	22.9	10.4	27	22	56.6	31.0	19.5	12.7
N2705-10-08	5/8	1/2	67.6	42.7	19.8	22.9	12.7	27	25	57.4	32.5	22.6	12.7
N2705-12-12	3/4	3/4	72.4	47.5	19.8	24.4	16.0	35	28.5	62.3	37.4	25.8	16.8
N2705-L-12-12	3/4	3/4	74.7	47.5	20.6	24.4	16.0	35	28.5	64.3	37.4	25.8	16.8
N2705-16-16	1	1	84.3	57.4	20.6	31.2	16.0	35	38	72.1	45.2	33.7	19.0
N2705-20-20	1-1/4	1-1/4	105.7	69.9	25.4	41.2	27.6	50	50	83.5	47.7	41.6	19.0
N2705-24-24	1-1/2	1-1/2	144.5	76.4	27.6	50.0	34.0	60	57	87.4	49.3	49.6	19.0

BRENNAN INDUSTRIES

**GOODYEAR**  
RUBBER PRODUCTS INC.

Call Toll Free: **1-866-711-4673**

WebSales@GoodyearRubberProducts.com

**We Ship  
World Wide**