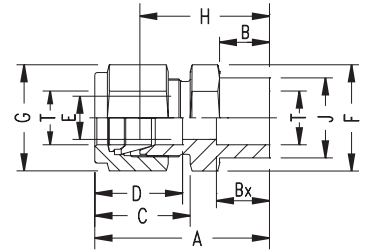


Double-Ferrule Tube Fittings

Socket Weld Male Connector N2426

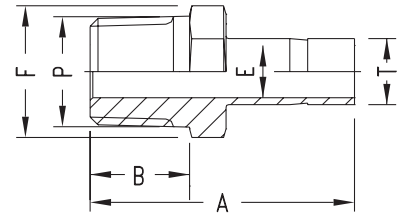
INCH OD Tubes



Part No.	T Tube OD	A	B	Bx	C	D	E min.	F A/F	G A/F	H	J
N2426-02-02	1/8	29.0	8.6	6.4	15.3	12.7	2.4	11	11	22.9	7.9
N2426-04-04	1/4	33.5	10.4	7.9	17.8	5.3	4.8	14	14	26.2	11.2
N2426-06-06	3/8	37.6	12.0	9.6	19.3	16.8	7.1	16	17	30.3	15.8
N2426-08-08	1/2	41.2	12.0	12.7	21.8	22.9	10.4	22	22	31.0	19.1
N2426-12-12	3/4	43.4	12.0	14.3	21.8	24.4	15.8	27	28.5	33.3	26.7
N2426-16-16	1	52.6	14.3	19.1	26.4	31.2	22.3	35	38	40.4	33.3
N2426-20-20	1-1/4	72.4	19.1	19.1	38.9	41.2	27.6	45	50	50.3	42.0
N2426-24-24	1-1/2	81.8	19.1	23.8	45.2	50.0	34.0	55	57	54.6	50.0

Male Adapter N2428

INCH OD Tubes x Male NPT Threads



Part No.	T Tube OD	P NPT Male	A	B	E min.	F A/F
N2428-02-02	1/8	1/8	29.5	9.6	4.8	11
N2428-02-04	1/8	1/4	34.8	14.4	7.1	14
N2428-04-02	1/4	1/8	31.8	9.6	4.8	11
N2428-04-04	1/4	1/4	37.0	14.3	4.8	14
N2428-04-06	1/4	3/8	37.8	14.3	4.8	19
N2428-04-08	1/4	1/2	43.4	19.1	4.8	22
N2428-05-04	5/16	1/4	38.1	14.3	6.3	14
N2428-06-04	3/8	1/4	38.9	14.3	7.1	14
N2428-06-06	3/8	3/8	39.6	14.3	7.1	19
N2428-06-08	3/8	1/2	45.2	19.1	7.1	22
N2428-08-04	1/2	1/4	44.5	14.3	7.1	14
N2428-08-06	1/2	3/8	45.2	14.3	9.9	19
N2428-08-08	1/2	1/2	50.8	19.1	9.9	22
N2428-10-08	5/8	1/2	52.3	19.1	11.9	22
N2428-12-08	3/4	1/2	52.3	19.1	11.9	22
N2428-12-12	3/4	3/4	52.3	19.1	15.0	27
N2428-16-12	1	3/4	58.7	19.1	15.7	27
N2428-16-16	1	1	66.0	23.8	20.3	35
N2428-20-20	1-1/4	1-1/4	80.3	23.8	27.6	45
N2428-24-24	1-1/2	1-1/2	94.5	26.2	33.2	55