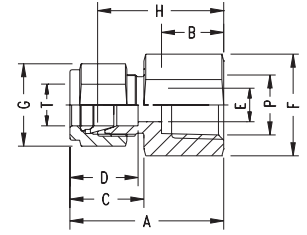


Double-Ferrule Tube Fittings

Female Connector N2405

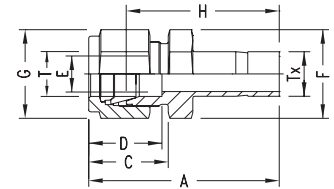
INCH OD Tubes x Female NPT Threads



Part No.	T Tube OD	P NPT Female	A	B	C	D	E min.	F A/F	G A/F	H
N2405-01-01	1/16	1/16	23.6	9.9	11.0	8.6	1.3	11	8	19.8
N2405-01-02	1/16	1/8	24.4	10.4	11.0	8.6	1.3	14	8	20.6
N2405-02-02	1/8	1/8	28.7	10.4	15.3	12.7	2.4	14	11	22.1
N2405-02-04	1/8	1/4	33.6	15.0	15.3	12.7	2.4	19	11	26.9
N2405-04-02	1/4	1/8	31.2	9.9	17.8	15.3	4.8	14	14	23.9
N2405-04-04	1/4	1/4	35.8	15.0	17.8	15.3	4.8	19	14	28.5
N2405-04-06	1/4	3/8	37.6	15.0	17.8	15.3	4.8	22	14	30.2
N2405-04-08	1/4	1/2	42.4	19.8	17.8	15.3	4.8	27	14	35.0
N2405-05-02	5/16	1/8	32.0	10.4	18.5	16.3	6.3	14	16	24.6
N2405-05-04	5/16	1/4	36.8	15.0	18.5	16.3	6.3	19	16	29.5
N2405-06-02	3/8	1/8	32.8	10.4	19.3	16.8	7.1	16	17	25.4
N2405-06-04	3/8	1/4	37.6	15.0	19.3	16.8	7.1	19	17	30.2
N2405-06-06	3/8	3/8	39.1	15.0	19.3	16.8	7.1	22	17	31.8
N2405-06-08	3/8	1/2	43.9	19.8	19.3	16.8	7.1	27	17	36.6
N2405-08-04	1/2	1/4	40.4	15.0	21.8	22.9	10.4	22	22	30.2
N2405-08-06	1/2	3/8	41.9	15.0	21.8	22.9	10.4	22	22	30.2
N2405-08-08	1/2	1/2	46.7	19.8	21.8	22.9	10.4	27	22	36.6
N2405-08-12	1/2	3/4	48.3	20.6	21.8	22.9	10.4	32	22	38.1
N2405-10-06	5/8	3/8	41.9	15.0	21.8	24.4	12.7	24	25	31.8
N2405-10-08	5/8	1/2	46.7	19.8	21.8	24.4	12.7	27	25	36.6
N2405-12-08	3/4	1/2	46.7	19.8	21.8	24.4	15.8	27	28.5	36.6
N2405-12-12	3/4	3/4	48.3	20.6	21.8	24.4	15.8	35	28.5	38.1
N2405-14-12	7/8	3/4	49.8	20.6	21.8	25.9	18.3	35	32	39.6
N2405-16-12	1	3/4	53.4	20.6	26.4	31.2	22.3	35	38	41.2
N2405-16-16	1	1	62.3	25.4	26.4	31.2	22.3	41	38	50.0
N2405-20-20	1-1/4	1-1/4	74.6	25.4	38.9	41.2	27.6	55	50	52.6
N2405-24-24	1-1/2	1-1/2	83.3	27.6	45.2	50.0	34.0	60	60	56.2

Reducer N2406

INCH OD Tubes To INCH OD Ports



Part No.	T Tube OD	Tx Tube OD	A	C	D	E min.	F A/F	G A/F	H
N2406-02-02	1/8	1/8	33.5	15.3	12.7	2.0	11	11	26.9
N2406-02-04	1/8	1/4	36.0	15.3	12.7	4.8	11	11	29.5
N2406-04-02	1/4	1/8	36.8	17.8	15.3	2.0	14	14	29.5
N2406-04-04	1/4	1/4	39.1	17.8	15.3	4.8	14	14	31.8
N2406-04-06	1/4	3/8	40.6	17.8	15.3	4.8	14	14	33.3
N2406-04-08	1/4	1/2	46.3	17.8	15.3	4.8	14	14	38.9
N2406-05-06	5/16	3/8	41.9	18.6	16.3	6.3	14	16	34.6
N2406-05-08	5/16	1/2	46.5	18.6	16.3	6.3	14	16	40.2
N2406-06-04	3/8	1/4	41.4	19.3	16.8	7.1	16	17	34.0
N2406-06-06	3/8	3/8	43.2	19.3	16.8	7.1	16	17	35.8
N2406-06-08	3/8	1/2	48.5	19.3	16.8	7.1	16	17	41.2
N2406-08-04	1/2	1/4	45.0	21.8	22.9	4.8	22	22	34.8
N2406-08-06	1/2	3/8	46.7	21.8	22.9	7.1	22	22	36.6
N2406-08-08	1/2	1/2	52.3	21.8	22.9	9.9	22	22	42.2
N2406-08-12	1/2	3/4	53.8	21.8	22.9	10.4	22	22	43.7
N2406-08-16	1/2	1	60.2	21.8	22.9	10.4	22	22	50.0
N2406-10-12	10-12	3/4	54.6	21.8	24.4	12.7	24	25	44.5
N2406-10-14	10-12	7/8	56.2	21.8	24.4	12.7	24	25	46.0
N2406-12-08	3/4	1/2	54.6	21.8	24.4	9.9	27	28.5	44.5
N2406-12-16	12-16	1	62.5	21.8	24.4	15.8	27	28.5	52.3
N2406-16-20	16-20	1-1/4	80.5	26.4	31.2	22.3	35	38	68.3
N2406-16-24	16-24	1-1/2	89.2	26.4	31.2	22.3	41	38	77.0