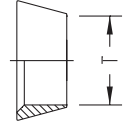


# Double-Ferrule Tube Fittings

## Front Ferrule NO319-F

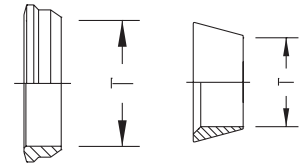
INCH OD Tubes



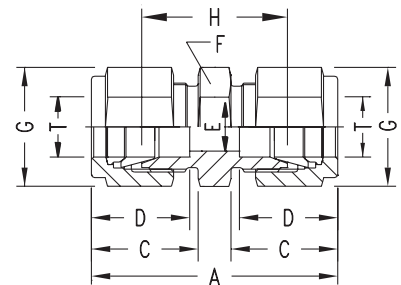
Part No.	T Tube OD
NO319-F-01	1/16
NO319-F-02	1/8
NO319-F-04	1/4
NO319-F-05	5/16
NO319-F-06	3/8
NO319-F-08	1/2
NO319-F-10	5/8
NO319-F-12	3/4
NO319-F-14	7/8
NO319-F-16	1
NO319-F-20	1-1/4
NO319-F-24	1-1/2
NO319-F-32	2

## Ferrule Set NO319-S

INCH OD Tubes



Part No.	T Tube OD
NO319-S-01	1/16
NO319-S-02	1/8
NO319-S-04	1/4
NO319-S-05	5/16
NO319-S-06	3/8
NO319-S-08	1/2
NO319-S-10	5/8
NO319-S-12	3/4
NO319-S-14	7/8
NO319-S-16	1
NO319-S-20	1-1/4
NO319-S-24	1-1/2
NO319-S-32	2



## Union N2403

INCH OD Tubes

Part No.	T Tube OD	A	C	D	E min.	F A/F	G A/F	H
N2403-01-01	1/16	25.1	11.0	8.6	1.3	8	8	17.5
N2403-02-02	1/8	35.6	15.3	12.7	2.4	11	11	22.4
N2403-04-04	1/4	40.9	17.8	15.3	4.8	14	14	26.2
N2403-05-05	5/16	42.9	18.5	16.3	6.3	14	16	28.2
N2403-06-06	3/8	45.0	19.3	16.8	7.1	16	17	30.2
N2403-08-08	1/2	51.3	21.8	22.9	10.4	22	22	31.0
N2403-10-10	5/8	52.0	21.8	24.4	12.7	24	25	31.8
N2403-12-12	3/4	53.6	21.8	24.4	15.8	27	28.5	33.3
N2403-14-14	7/8	55.2	21.8	25.9	18.2	30	32	34.8
N2403-16-16	1	64.8	26.4	31.2	22.3	35	38	40.4
N2403-20-20	1-1/4	92.2	38.9	41.2	27.6	46	50	48.0
N2403-24-24	1-1/2	108.0	45.2	50.0	34.0	55	57	53.6
N2403-32-32	2	149.4	62.7	67.6	46.0	70	76	74.7