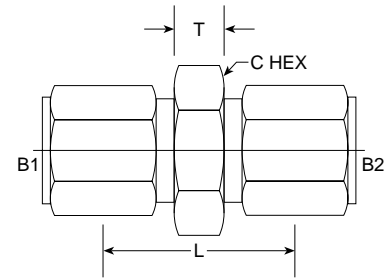


BT-BT Tube Union Large Hex Straight C2403-LH Series

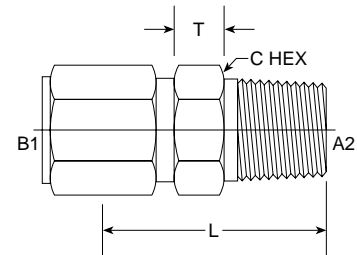
SAE# 080119 / MS# 51856



PART NO. SIZE	TUBE O.D.	B1 THREAD	B2 THREAD	L LGTH	M.M.	T WIDTH	M.M.	C HEX	C HEX	M.M.	Standard Material From Stock			
											S	FG	SS	B
C2403-LH-04-04	1/4	7/16-20	7/16-20	1.190	30.23	0.220	5.588	11/16	0.688	17.47	•		•	
C2403-LH-06-06	3/8	9/16-18	9/16-18	1.230	31.24	0.250	6.350	13/16	0.812	20.62	•		•	
C2403-LH-08-06	1/2 3/8	3/4-16	9/16-18	1.220	30.99	0.250	6.350	1	1.000	25.40	•		•	
C2403-LH-08-08	1/2	3/4-16	3/4-16	1.420	36.07	0.250	6.350	1	1.000	25.40	•		•	
C2403-LH-10-10	5/8	7/8-14	7/8-14	1.330	33.78	0.310	7.874	1 1/8	1.125	28.57	•		•	
C2403-LH-12-12	3/4	1 1/16-12	1 1/16-12	1.610	40.89	0.380	9.652	1 3/8	1.375	34.92	•		•	
C2403-LH-16-16	1	1 5/16-12	1 5/16-12	1.810	45.97	0.380	9.652	1 5/8	1.625	41.27			•	

BT-MP Adapter Straight C2404 Series

SAE# 080102 / MS# 51819



PART NO. SIZE	TUBE O.D.	B1 THREAD	A2 NPTF	L LGTH	M.M.	T WIDTH	M.M.	C HEX	C HEX	M.M.	Standard Material From Stock			
											S	FG	SS	B
C2404-02-02	1/8	5/16-24	1/8-27	1.040	26.42	0.220	5.59	7/16	0.438	11.12	•		•	
C2404-02-04	1/8	5/16-24	1/4-18	1.250	31.75	0.250	6.35	9/16	0.562	14.27	•		•	
NEW C2404-03-02											•		•	
C2404-04-02	1/4	7/16-20	1/8-27	1.120	28.45	0.250	6.35	1/2	0.500	12.70	•		•	•
C2404-04-04	1/4	7/16-20	1/4-18	1.330	33.78	0.250	6.35	9/16	0.562	14.27	•		•	•
C2404-04-06	1/4	7/16-20	3/8-18	1.330	33.78	0.250	6.35	3/4	0.750	19.05	•		•	
C2404-04-08	1/4	7/16-20	1/2-14	1.580	40.13	0.250	6.35	7/8	0.875	22.22	•		•	
C2404-05-02	5/16	1/2-20	1/8-27	1.120	28.45	0.250	6.35	9/16	0.562	14.27	•		•	
C2404-05-04	5/16	1/2-20	1/4-18	1.330	33.78	0.250	6.35	9/16	0.562	14.27	•		•	
C2404-05-06	5/16	1/2-20	3/8-18	1.420	36.09	0.250	6.35	3/4	0.750	19.05	•		•	
C2404-06-02	3/8	9/16-18	1/8-27	1.160	29.46	0.250	6.35	5/8	0.625	15.87	•		•	
C2404-06-04	3/8	9/16-18	1/4-18	1.340	34.04	0.250	6.35	5/8	0.625	15.87	•		•	
C2404-06-06	3/8	9/16-18	3/8-18	1.340	34.04	0.250	6.35	13/16	0.812	20.62	•		•	•
C2404-06-08	3/8	9/16-18	1/2-14	1.600	40.65	0.250	6.35	15/16	0.938	23.82	•		•	
C2404-08-04	1/2	3/4-16	1/4-18	1.440	36.58	0.250	6.35	13/16	0.812	20.62	•		•	
C2404-08-06	1/2	3/4-16	3/8-18	1.440	36.58	0.250	6.35	13/16	0.812	20.62	•		•	
C2404-08-08	1/2	3/4-16	1/2-14	1.690	42.93	0.310	7.87	15/16	0.938	23.82	•		•	
C2404-08-12	1/2	3/4-16	3/4-14	1.750	44.45	0.380	9.65	1-1/8	1.125	28.57	•		•	
C2404-10-06	5/8	7/8-14	3/8-16	1.560	39.62	0.380	9.65	15/16	0.938	23.82	•		•	
C2404-10-08	5/8	7/8-14	1/2-14	1.750	44.45	0.310	7.87	15/16	0.938	23.82	•		•	
C2404-10-12	5/8	7/8-14	3/4-14	1.830	46.48	0.380	9.65	1 1/8	1.125	28.57	•		•	
C2404-12-08	3/4	1 1/16-12	1/2-14	1.880	47.75	0.380	9.65	1 1/8	1.125	28.57	•		•	
C2404-12-12	3/4	1 1/16-12	3/4-14	1.880	47.75	0.380	9.65	1 1/8	1.125	28.57	•		•	
C2404-12-16	3/4	1 1/16-12	1-11 1/2	2.080	52.83	0.380	9.65	1 3/8	1.375	34.92	•		•	
NEW C2404-14-12											•		•	
C2404-16-12	1	1 5/16-12	3/4-14	1.880	47.75	0.380	9.65	1 3/8	1.375	34.92	•		•	
C2404-16-16	1	1 5/16-12	1-11 1/2	2.070	52.58	0.380	9.65	1 3/8	1.375	34.92	•		•	
C2404-20-20	1 1/4	1 5/8-12	1 1/4-11 1/2	2.180	55.37	0.460	11.68	1 11/16	1.688	42.93	•		•	
C2404-24-20	1 1/2	1 7/8-12	1 1/4-11 1/2	2.280	57.91	0.562	14.22	2	2.000	50.80	•		•	
C2404-24-24	1 1/2	1 7/8-12	1 1/2-11 1/2	2.280	57.91	0.530	13.46	2	2.000	50.80	•		•	
C2404-32-32	2	2 1/2-12	2-11 1/2	2.460	62.48	0.680	17.27	2 5/8	2.625	66.80	•		•	