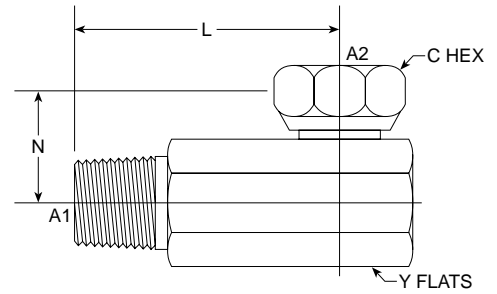


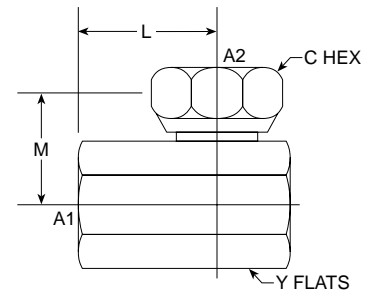
# MP-FPS 90° Long 1501-L Series



PART NO. SIZE	PIPE O.D.	A1 NPTF	A2 NPSM	L LGTH	N		C		Y		Standard Material From Stock						
					M.M.	LGTH M.M.	HEX	HEX	M.M.	FLATS	FLATS	M.M.	S	FG	SS	B	
1501-L-02-02	1/8	1/8-27	1/8-27	1.640	41.66	0.940	23.88	9/16	0.562	14.27	9/16	0.562	14.27	•		•	
1501-L-04-04	1/4	1/4-18	1/4-18	2.250	57.15	1.190	30.23	11/16	0.687	17.45	11/16	0.687	17.45	•		•	
1501-L-06-06	3/8	3/8-18	3/8-18	2.760	70.10	1.500	38.10	7/8	0.875	22.23	7/8	0.875	22.23	•		•	
<b>NEW</b> 1501-L-08-06														•		•	
1501-L-08-08	1/2	1/2-14	1/2-14	3.190	81.03	1.500	38.10	1	1.000	25.40	1	1.000	25.40	•		•	
1501-L-12-12	3/4	3/4-14	3/4-14	3.660	92.96	2.000	50.80	1 1/4	1.250	31.75	1 1/4	1.250	31.75	•		•	
1501-L-16-16	1	1 11-1/2	1 11-1/2	4.330	109.99	1.440	36.58	1 1/2	1.500	38.10	1 1/2	1.500	38.10	•		•	

# FP-FPS 90° 1502 Series

SAE # 140231



PART NO. SIZE	PIPE O.D.	A1 NPTF	A2 NPSM	L LGTH	M		C		Y		Standard Material From Stock						
					M.M.	LGTH M.M.	HEX	HEX	M.M.	FLATS	FLATS	M.M.	S	FG	SS	B	
1502-02-02	1/8	1/8-27	1/8-27	0.656	16.66	0.687	17.45	9/16	0.560	14.22	9/16	0.560	14.22	•			
1502-02-04	1/8 1/4	1/8-27	1/4-18	0.781	19.84	0.690	17.53	11/16	0.687	17.45	11/16	0.687	17.45	•			
1502-04-02	1/4 1/8	1/4-18	1/8-27	0.750	19.05	0.937	23.80	9/16	0.560	14.22	11/16	0.687	17.45	•			
1502-04-04	1/4	1/4-18	1/4-18	0.781	19.84	0.937	23.80	11/16	0.687	17.45	11/16	0.687	17.45	•			
1502-04-06	1/4 3/8	1/4-18	3/8-18	0.937	23.80	1.062	26.97	7/8	0.875	22.23	7/8	0.875	22.23	•		•	
1502-06-04	3/8 1/4	3/8-18	1/4-18	0.796	20.22	1.062	26.97	11/16	0.687	17.45	7/8	0.875	22.23	•		•	
1502-06-06	3/8	3/8-18	3/8-18	0.937	23.80	1.062	26.97	7/8	0.875	22.23	7/8	0.875	22.23	•		•	
1502-06-08	3/8 1/2	3/8-18	1/2-14	1.000	25.40	1.250	31.75	1	1.000	25.40	1	1.000	25.40	•		•	
1502-08-04	1/2 1/4	3/4-16	1/4-18	0.937	23.80	1.250	31.75	11/16	0.687	17.45	1	1.000	25.40	•		•	
1502-08-06	1/2 3/8	1/2-14	3/8-18	1.000	25.40	1.250	31.75	7/8	0.875	22.23	1	1.000	25.40	•		•	
1502-08-08	1/2	1/2-14	1/2-14	1.000	25.40	1.250	31.75	1	1.000	25.40	1	1.000	25.40	•		•	
1502-08-12	1/2 3/4	1/2-14	3/4-14	1.250	31.75	1.437	36.50	1 1/4	1.250	31.75	1 1/4	1.250	31.75	•		•	
1502-12-08	3/4	3/4-14	1/2-14	1.125	28.58	1.437	36.50	1	1.000	25.40	1 1/4	1.250	31.75	•		•	
1502-12-12	3/4 1/2	3/4-14	3/4-14	1.250	31.75	1.437	36.50	1 1/4	1.250	31.75	1 1/4	1.250	31.75	•	•	•	
1502-12-16	3/4 1	3/4-14	1-11 1/2	1.390	35.31	1.750	44.45	1 1/2	1.500	38.10	1 1/2	1.500	38.10	•		•	
1502-16-12	1 3/4	1-11 1/2	3/4-14	1.375	34.93	1.750	44.45	1 1/4	1.250	31.75	1 1/2	1.500	38.10	•		•	
1502-16-16	1	1-11 1/2	1-11 1/2	0.390	09.91	1.750	44.45	1 1/2	1.500	38.10	1 1/2	1.500	38.10	•	•	•	
1502-20-16	1 1/4 1	1 1/4-11 1/2	1-11 1/2	1.626	41.30	2.000	50.80	1 1/2	1.500	38.10	1 7/8	1.875	47.63	•		•	
1502-20-20	1 1/4	1 1/4-11 1/2	1 1/4-11 1/2	1.656	42.06	2.000	50.80	1 7/8	1.875	47.63	1 7/8	1.875	47.63	•		•	
1502-24-24	1 1/2	1 1/2-11 1/2	1 1/2-11 1/2	1.734	44.04	2.250	57.15	2 1/8	2.125	53.98	2 1/8	2.125	53.98	•		•	
1502-32-32	2	2-11 1/2	2-11 1/2	2.312	58.72	2.500	63.50	2 5/8	2.625	66.68	2 5/8	2.625	66.68	•		•	