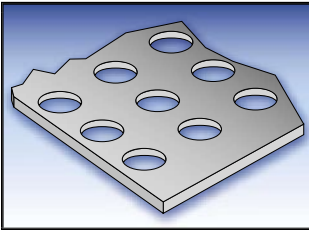


CUT PARTS



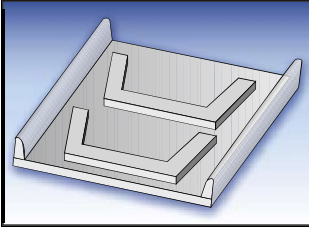
Precise shapes can be cut from any spec in Beltservice's inventory using advanced waterjet technology. A wide range of materials and dimensions can be cut with extreme precision when tolerances are critical. Exceptional edge quality is produced without inducing heat affected zones or mechanical stress. Raw materials maintain their structural integrity, and deburring is usually not required. Perforated belts can also be fashioned using our software-controlled waterjet system.

SPECIALTY BELTS



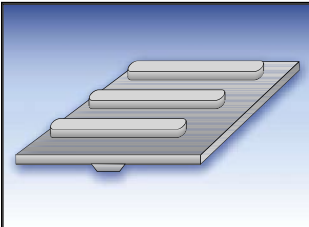
Sizing Belts

Holes of various diameters can be punched in the belt to allow items below a certain size to fall through. These kinds of belts are common in the agricultural industry where they are used to size fruits and vegetables.



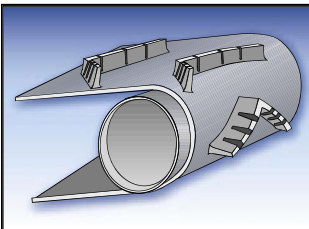
Solid Waste Disposal Belts

Beltservice offers a wide variety of belts for this growing industry. Popular items include flanged and cleated belts for sorting lines and incline conveying from the main tipping floor. This is a truly demanding application requiring high-quality construction.



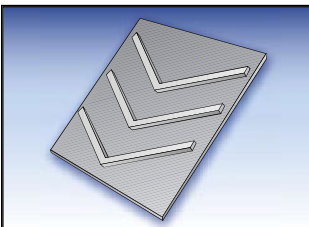
Trencher Belt

A very popular replacement item also known as a ditcher belt. This combination of cleats and tracking guide is universally used on ditch-digging and road construction equipment. Cleats and guides are hot molded to heavy duty belting for rugged severe service.



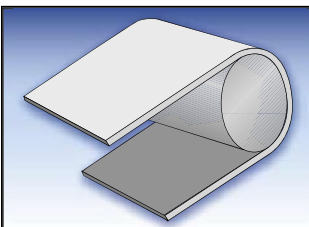
Roofers Belt

Every large roofing contractor has one or more portable conveyors which they haul to the new building job site and use to convey roofing materials – both bulk and bagged – up steep inclines. These belts generally feature notched chevron cleats up to 2" tall.



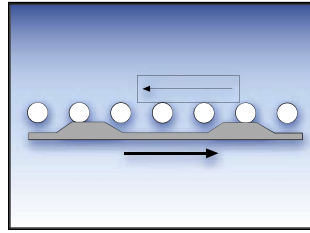
Scrap Metal Belt

Every scrap metal yard has one or more scrap metal conveyors. This severe application requires a heavy duty belt and cleats to withstand the cutting, gouging and abrasion of the scrap metal. Rubber chevron cleats as well as rubber or urethane cross cleats are recommended.



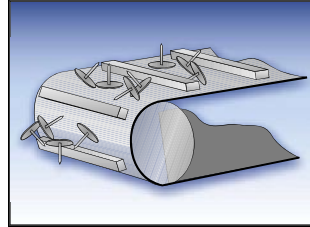
Die Stamping Belts

High quality belts for this brutal application. Urethane cover of belt is repeatedly cut into by the die cutter. The special construction "heals" itself, increasing the life of the belt.



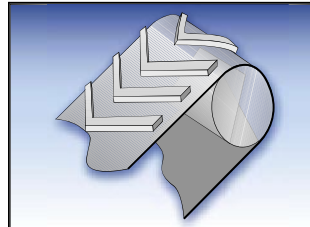
Exciter/Activator Belts

Also known as "ripple belt" pads, these pads can be made any length, thickness and width required. As the belt and pads travel underneath the carrier idlers, the pads contact the rollers and drive them, propelling a unit load forward. Available in rubber or in low durometer urethane.



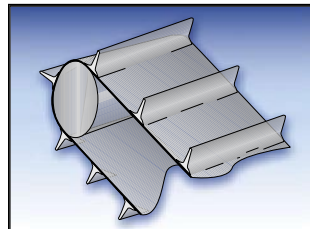
Urethane Cleated Belts for Small Pulleys and Nose Bars

Fabricated belt for applications requiring a cleated belt that must operate on very small pulleys. Urethane belts and cleats are resistant to abrasion. Cleats are welded into the belt to ensure superior adhesion.



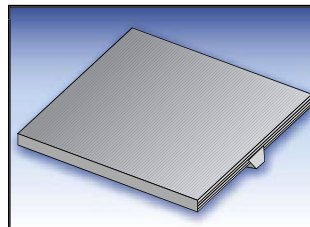
Cold Planer (Road Scalper) Belts

Cold planer belts are used on large portable roto-plane equipment used to remove old roadbed pavement. The belts carry the material to waiting trucks. Belts feature rubber belting with hot molded chevrons on close centers for high-volume conveying.



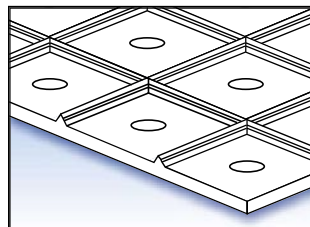
Cleated White Food Belt

Beltservice produces the widest variety and highest quality cleated white food belting available in the industry. Each cleat is hand crafted to a smooth finish leaving no place for bacteria or waste particles to collect. Fabrication materials are acceptable for use in FDA applications.



APC V-Guided Belt

Popular replacement belt for APC accumulation conveyors. The V-guide is recessed one ply into the carcass to improve the guide's ability to withstand lateral pressures. Available from stock in: smooth rubber covers, PVC covers, and pebbletop and roughtop textures.



Wide Belt Sander Belts

Beltservice offers a variety of belts for wide belt sanding machines for the lumber industry. Both smooth and impression surface belts are available for these demanding applications. Popular covers are smooth, roughtop and diamond top. Many styles also available.