

# BLACK HEAVY DUTY/SOLID WOVEN PVC BELTING

## 3 Ply Cover x Bare

Belts designed for light to medium-duty applications where no oil or wood turpines are present. Ideal for use on slider bed conveyors.

**75c** 3 Ply 225 1/16" x Bare

**77c** 3 Ply 330 1/16" x Bare

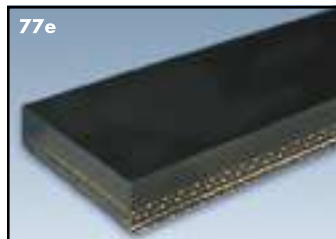
**77d** 3 Ply 330 3/16" x Bare



## 4 Ply Cover x Bare

This belt is ideal for medium to heavy-duty service in slider bed applications. It was designed for use where no oil or wood turpines are present.

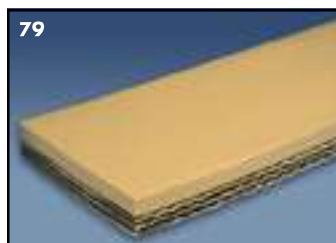
**77e** 4 Ply 440 1/4" x Bare



## 3 Ply 225 Tan Pure Gum x Bare

Popularly used in the lumber industry as a slow down belt. No. 79 is a versatile belt that can be used in temperatures ranging from -40°F to 250°F (intermittent).

**79** 3 Ply 225 3/16" Tan Pure Gum x Bare



## Skirtboard Rubber/Chute Lining

Used at the point of loading for guiding product onto the center of the belt and for protecting metal parts. Also useful for lining metal and wood chutes, hoppers, and troughs. Commonly found in construction, sand and gravel operations, quarries and mines, and in feed and grain applications.

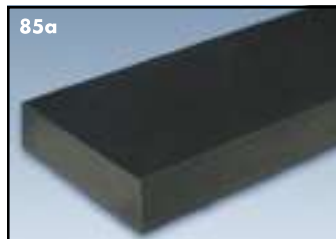
**84** 1/4" Skirtboard

**85** 3/8" Skirtboard

**85a** 1/2" Skirtboard

**85b** 3/4" Skirtboard

**85c** 1" Skirtboard

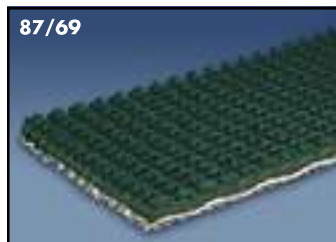


## PVC Roughtops

Rough textured, non-skid surface enables packages, boxes, cases, and other products to be conveyed on incline or decline. Uni-ply construction and PVC compounds result to combine all the best properties for high traction conveying and best resistance to oils, greases, water, industrial chemicals, abuse, and stretch. Green Supergrip is softer durometer for highest grab and steepest inclines.

**86/68** PVC - 120 Black Roughtop x FS

**87/69** PVC - 120 Green Supergrip Roughtop x FS

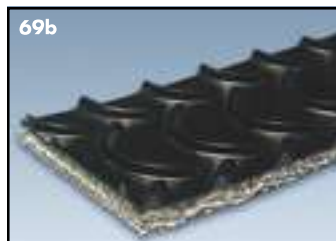


## PVC Black Crescent Top

Aggressive scoop pattern for high incline conveying. Crescent pattern creates hundreds of tiny "buckets" capable of conveying liquids along with solids. Conversely, the belt can be run the opposite direction, and the upside-down crescents convey solids while draining off liquids. Belt operates smoothly and quietly on return. Good tubeveyor belt.

**69a** PVC-120 Black Crescent Top x FS

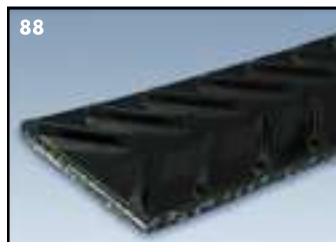
**69b** PVC-200 Black Crescecent Top x FS



## PVC-100 Black Chevron Top

The herringbone pattern of alternating rows of solid PVC chevrons forms a cover highly capable of moving bulk, free-flowing materials such as grains, food stuffs, feeds, and fertilizers up steep inclines. Ideal for tubeveyors.

**88** PVC-100 Black Chevron Top II x FS



**BELT SAMPLES ARE AVAILABLE! CALL FOR DETAILS.**